

電気計測器の受注額推移

「機械受注統計」(内閣府) ([https://www.esri.cao.go.jp/jp/stat/juchu/menu\\_juchu.html](https://www.esri.cao.go.jp/jp/stat/juchu/menu_juchu.html)) をもとにJEMIMA作成  
 内閣府機械受注統計HPの公表資料ならびに調査結果利用上の注意をご確認の上でご利用ください。(金額：百万円、前年比：前年同月比増減率%)

| 機械受注統計<br>電気計測器 | 民 需   |       |       |       |            |       |        |      |           |       |         |       |
|-----------------|-------|-------|-------|-------|------------|-------|--------|------|-----------|-------|---------|-------|
|                 | 製造業   |       |       |       |            |       |        |      |           |       |         |       |
|                 | 食品製造業 |       | 繊維工業  |       | パルプ・紙・紙加工品 |       | 化学工業   |      | 石油製品・石灰製品 |       | 窯業・土石製品 |       |
|                 | 受注額   | 前年比   | 受注額   | 前年比   | 受注額        | 前年比   | 受注額    | 前年比  | 受注額       | 前年比   | 受注額     | 前年比   |
| 2019CY          | 4,182 | -10.9 | 719   | -16.7 | 4,523      | -3.1  | 27,162 | 7.3  | 4,489     | 28.6  | 1,466   | 13.9  |
| 2019FY          | 4,159 | -4.7  | 941   | 19.9  | 4,622      | 2.0   | 26,845 | 3.7  | 4,426     | 12.5  | 1,480   | 18.5  |
| 2019_10-12      | 951   | -14.2 | 131   | -31.8 | 1,116      | 11.7  | 6,646  | 14.0 | 1,112     | 10.2  | 280     | -42.3 |
| 2020_01-03      | 904   | -2.5  | 371   | 149.0 | 1,287      | 8.3   | 7,463  | -4.1 | 1,453     | -4.2  | 368     | 4.0   |
| 2020_04-06      | 945   | -15.8 | 267   | 4.7   | 1,323      | -2.0  | 7,307  | 7.5  | 937       | 20.0  | 272     | -19.8 |
| 2020_07-09      | 1,027 | -13.1 | 197   | 7.1   | 811        | -6.7  | 6,368  | 7.3  | 923       | -14.5 | 381     | -22.7 |
| 2020_09         | 354   | -16.7 | 92    | 87.8  | 302        | -8.5  | 2,811  | 34.0 | 421       | -11.4 | 168     | -49.5 |
| 2020_10         | 367   | 24.4  | 111   | 246.9 | 530        | 77.9  | 1,910  | 1.6  | 257       | -16.6 | 94      | 17.5  |
| 2020_11         | 242   | -12.0 | 94    | 168.6 | 256        | -45.5 | 1,887  | -2.5 | 280       | -24.9 | 104     | 62.5  |
| 2020_01~2020_11 | 3,485 | -8.3  | 1,040 | 58.8  | 4,207      | 0.8   | 24,935 | 2.5  | 3,850     | -5.1  | 1,219   | -8.3  |
| 2020_04~2020_11 | 2,581 | -10.2 | 669   | 32.2  | 2,920      | -2.2  | 17,472 | 5.6  | 2,397     | -5.7  | 851     | -12.8 |

(金額：百万円、前年比：前年同月比増減率%)

| 機械受注統計<br>電気計測器 | 民 需   |       |       |       |      |       |           |       |       |       |                   |       |
|-----------------|-------|-------|-------|-------|------|-------|-----------|-------|-------|-------|-------------------|-------|
|                 | 製造業   |       |       |       |      |       |           |       |       |       |                   |       |
|                 | 鉄鋼業   |       | 非鉄金属  |       | 金属製品 |       | はん用・生産用機械 |       | 業務用機械 |       | (内) 事務・サービス・娯楽用機械 |       |
|                 | 受注額   | 前年比   | 受注額   | 前年比   | 受注額  | 前年比   | 受注額       | 前年比   | 受注額   | 前年比   | 受注額               | 前年比   |
| 2019CY          | 3,486 | -5.4  | 1,504 | -15.8 | 330  | -64.9 | 19,741    | -19.6 | 1,933 | -7.2  | 336               | -1.2  |
| 2019FY          | 3,641 | -2.6  | 1,450 | -15.0 | 343  | -58.3 | 19,787    | -15.2 | 1,974 | -4.5  | 358               | 8.5   |
| 2019_10-12      | 755   | -19.1 | 363   | -29.2 | 106  | 47.2  | 4,661     | -20.3 | 365   | -29.7 | 51                | -20.3 |
| 2020_01-03      | 1,057 | 17.2  | 325   | -14.2 | 97   | 15.5  | 5,346     | 0.9   | 478   | 9.4   | 120               | 22.4  |
| 2020_04-06      | 637   | -28.7 | 359   | -16.3 | 79   | 19.7  | 2,701     | -51.7 | 464   | -3.7  | 85                | -38.0 |
| 2020_07-09      | 696   | -25.6 | 328   | -1.5  | 132  | 78.4  | 2,741     | -34.5 | 544   | -16.2 | 78                | 56.0  |
| 2020_09         | 315   | 18.4  | 108   | -6.1  | 64   | 146.2 | 1,095     | -17.0 | 179   | -46.1 | 17                | 41.7  |
| 2020_10         | 254   | 7.6   | 82    | -33.3 | 29   | -6.5  | 1,027     | -30.4 | 130   | 5.7   | 25                | -10.7 |
| 2020_11         | 163   | -40.3 | 91    | -9.0  | 17   | -63.8 | 1,266     | -19.4 | 109   | -34.3 | 23                | 130.0 |
| 2020_01~2020_11 | 2,807 | -13.4 | 1,185 | -13.1 | 354  | 17.2  | 13,081    | -27.8 | 1,725 | -7.1  | 331               | 2.5   |
| 2020_04~2020_11 | 1,750 | -25.1 | 860   | -12.7 | 257  | 17.9  | 7,735     | -39.7 | 1,247 | -12.2 | 211               | -6.2  |

(金額：百万円、前年比：前年同月比増減率%)

| 機械受注統計<br>電気計測器 | 民 需    |       |        |       |          |       |     |       |          |       |        |       |         |       |
|-----------------|--------|-------|--------|-------|----------|-------|-----|-------|----------|-------|--------|-------|---------|-------|
|                 | 製造業    |       |        |       |          |       |     |       |          |       |        |       |         |       |
|                 | 電気機械   |       | 情報通信機械 |       | 自動車・同付属品 |       | 造船業 |       | その他輸送用機械 |       | その他製造業 |       | 製造業計    |       |
|                 | 受注額    | 前年比   | 受注額    | 前年比   | 受注額      | 前年比   | 受注額 | 前年比   | 受注額      | 前年比   | 受注額    | 前年比   | 受注額     | 前年比   |
| 2019CY          | 14,133 | -65.6 | 12,120 | -33.2 | 17,711   | -21.3 | 803 | 37.3  | 121      | 51.3  | 4,515  | 22.5  | 118,938 | -25.4 |
| 2019FY          | 13,227 | -63.4 | 13,631 | -8.8  | 17,003   | -24.6 | 713 | 22.9  | 125      | 45.3  | 5,234  | 38.7  | 119,601 | -20.6 |
| 2019_10-12      | 2,207  | -54.0 | 2,898  | -25.7 | 4,295    | -32.5 | 278 | 16.3  | 39       | 143.8 | 972    | 4.4   | 27,175  | -19.5 |
| 2020_01-03      | 4,230  | -17.6 | 4,051  | 59.5  | 3,952    | -15.2 | 53  | -62.9 | 34       | 13.3  | 1,891  | 61.3  | 33,360  | 2.0   |
| 2020_04-06      | 2,348  | -44.6 | 3,059  | -9.3  | 2,886    | -22.4 | 110 | -59.6 | 16       | -5.9  | 662    | -33.6 | 24,372  | -20.7 |
| 2020_07-09      | 2,585  | 1.3   | 3,382  | 2.2   | 2,821    | -44.0 | 75  | -31.8 | 19       | -45.7 | 791    | -42.4 | 23,821  | -15.9 |
| 2020_09         | 898    | 10.9  | 1,052  | 11.6  | 1,071    | -32.7 | 13  | -60.6 | 7        | -65.0 | 331    | -63.1 | 9,281   | -7.8  |
| 2020_10         | 1,678  | 142.8 | 523    | -46.1 | 1,045    | -24.2 | 21  | 16.7  | 7        | -12.5 | 358    | 17.0  | 8,423   | 2.1   |
| 2020_11         | 1,509  | 102.8 | 1,170  | 23.4  | 1,727    | 7.5   | 110 | -12.0 | 5        | -58.3 | 213    | -25.0 | 9,243   | 2.4   |
| 2020_01~2020_11 | 12,350 | -7.6  | 12,185 | 9.4   | 12,431   | -24.2 | 369 | -44.8 | 81       | -20.6 | 3,915  | -5.3  | 99,219  | -9.0  |
| 2020_04~2020_11 | 8,120  | -1.3  | 8,134  | -5.4  | 8,479    | -27.8 | 316 | -39.8 | 47       | -34.7 | 2,024  | -31.6 | 65,859  | -13.7 |

(金額：百万円、前年比：前年同月比増減率%)

| 機械受注統計<br>電気計測器 | 民 需  |         |              |       |       |       |       |       |         |       |       |       |         |       |
|-----------------|------|---------|--------------|-------|-------|-------|-------|-------|---------|-------|-------|-------|---------|-------|
|                 | 非製造業 |         |              |       |       |       |       |       |         |       |       |       |         |       |
|                 | 農林漁業 |         | 鉱業・採石業・砂利採取業 |       | 建設業   |       | 電力業   |       | 運輸業・郵便業 |       | 通信業   |       | 卸売業・小売業 |       |
|                 | 受注額  | 前年比     | 受注額          | 前年比   | 受注額   | 前年比   | 受注額   | 前年比   | 受注額     | 前年比   | 受注額   | 前年比   | 受注額     | 前年比   |
| 2019CY          | 62   | 51.2    | 1,636        | -1.9  | 1,448 | -1.4  | 5,065 | 5.2   | 479     | -39.1 | 3,991 | 50.5  | 1,885   | -28.8 |
| 2019FY          | 83   | 144.1   | 1,527        | -12.3 | 1,417 | -5.2  | 4,760 | -4.9  | 604     | -28.9 | 3,751 | 5.0   | 1,936   | -26.4 |
| 2019_10-12      | 21   | 50.0    | 360          | 14.6  | 379   | 1.9   | 1,124 | -23.2 | 164     | 412.5 | 937   | 4.0   | 419     | -28.6 |
| 2020_01-03      | 24   | 700.0   | 444          | -19.7 | 345   | -8.2  | 1,265 | -19.4 | 245     | 104.2 | 1,493 | -13.8 | 601     | 9.3   |
| 2020_04-06      | 106  | 1,225.0 | 428          | 0.7   | 295   | -19.8 | 1,198 | 8.7   | 99      | -30.3 | 383   | -11.3 | 378     | -0.3  |
| 2020_07-09      | 21   | -30.0   | 386          | 29.5  | 286   | -12.0 | 1,207 | -4.9  | 97      | 83.0  | 489   | -45.0 | 638     | 18.8  |
| 2020_09         | 10   | -58.3   | 147          | -2.0  | 97    | -1.0  | 449   | -1.3  | 21      | -12.5 | 328   | -44.6 | 120     | -29.8 |
| 2020_10         | 5    | -50.0   | 95           | -1.0  | 140   | 10.2  | 391   | 25.3  | 16      | -40.7 | 251   | 128.2 | 201     | 42.6  |
| 2020_11         | 116  | 1,557.1 | 62           | -51.9 | 108   | -2.7  | 232   | -26.1 | 18      | -65.4 | 134   | -59.9 | 107     | -11.6 |
| 2020_01~2020_11 | 272  | 369.0   | 1,415        | -5.7  | 1,174 | -10.2 | 4,293 | -6.0  | 475     | 20.6  | 2,750 | -21.4 | 1,925   | 11.4  |
| 2020_04~2020_11 | 248  | 350.9   | 971          | 2.4   | 829   | -11.0 | 3,028 | 1.0   | 230     | -16.1 | 1,257 | -28.8 | 1,324   | 12.4  |

(金額：百万円、前年比：前年同月比増減率%)

| 機械受注統計<br>電気計測器 | 民需<br>非製造業 |       |      |       |         |       |       |       |         |       |         |       |         |       |
|-----------------|------------|-------|------|-------|---------|-------|-------|-------|---------|-------|---------|-------|---------|-------|
|                 | 金融業・保険業    |       | 不動産業 |       | 情報サービス業 |       | リース業  |       | その他非製造業 |       | 非製造業計   |       | 民間需要合計  |       |
|                 | 受注額        | 前年比   | 受注額  | 前年比   | 受注額     | 前年比   | 受注額   | 前年比   | 受注額     | 前年比   | 受注額     | 前年比   | 受注額     | 前年比   |
| 2019CY          | 7          | 250.0 | 359  | -16.7 | 690     | 34.5  | 2,386 | -57.4 | 143,540 | 10.8  | 161,548 | 7.6   | 280,486 | -9.4  |
| 2019FY          | 4          | -20.0 | 381  | 2.4   | 592     | -3.6  | 2,406 | -50.7 | 145,715 | 7.9   | 163,176 | 4.4   | 282,777 | -7.8  |
| 2019_10-12      | 0          | ----- | 95   | -7.8  | 133     | 25.5  | 563   | -68.7 | 34,728  | -1.4  | 38,923  | -4.8  | 66,098  | -11.5 |
| 2020_01-03      | 0          | ----- | 119  | 22.7  | 182     | -35.0 | 775   | 2.6   | 37,033  | 6.2   | 42,526  | 4.0   | 75,886  | 3.1   |
| 2020_04-06      | 0          | ----- | 79   | -12.2 | 140     | 45.8  | 388   | -31.8 | 33,818  | -10.7 | 37,312  | -10.0 | 61,684  | -14.6 |
| 2020_07-09      | 1          | -75.0 | 66   | -14.3 | 101     | -44.2 | 479   | -4.0  | 31,039  | -14.0 | 34,810  | -13.5 | 58,631  | -14.5 |
| 2020_09         | 0          | ----- | 31   | 3.3   | 48      | -38.5 | 242   | 21.6  | 11,076  | -13.5 | 12,569  | -14.1 | 21,850  | -11.5 |
| 2020_10         | 0          | ----- | 33   | 43.5  | 23      | 130.0 | 127   | -44.5 | 13,682  | -10.9 | 14,964  | -9.0  | 23,387  | -5.3  |
| 2020_11         | 0          | ----- | 14   | -65.9 | 27      | -42.6 | 504   | 130.1 | 12,700  | 37.6  | 14,022  | 32.3  | 23,265  | 18.5  |
| 2020_01~2020_11 | 1          | -85.7 | 311  | -5.2  | 473     | -23.0 | 2,273 | 0.1   | 128,272 | -3.8  | 143,634 | -4.0  | 242,853 | -6.1  |
| 2020_04~2020_11 | 1          | -75.0 | 192  | -16.9 | 291     | -12.9 | 1,498 | -1.2  | 91,239  | -7.4  | 101,108 | -7.0  | 166,967 | -9.8  |

(金額：百万円、前年比：前年同月比増減率%)

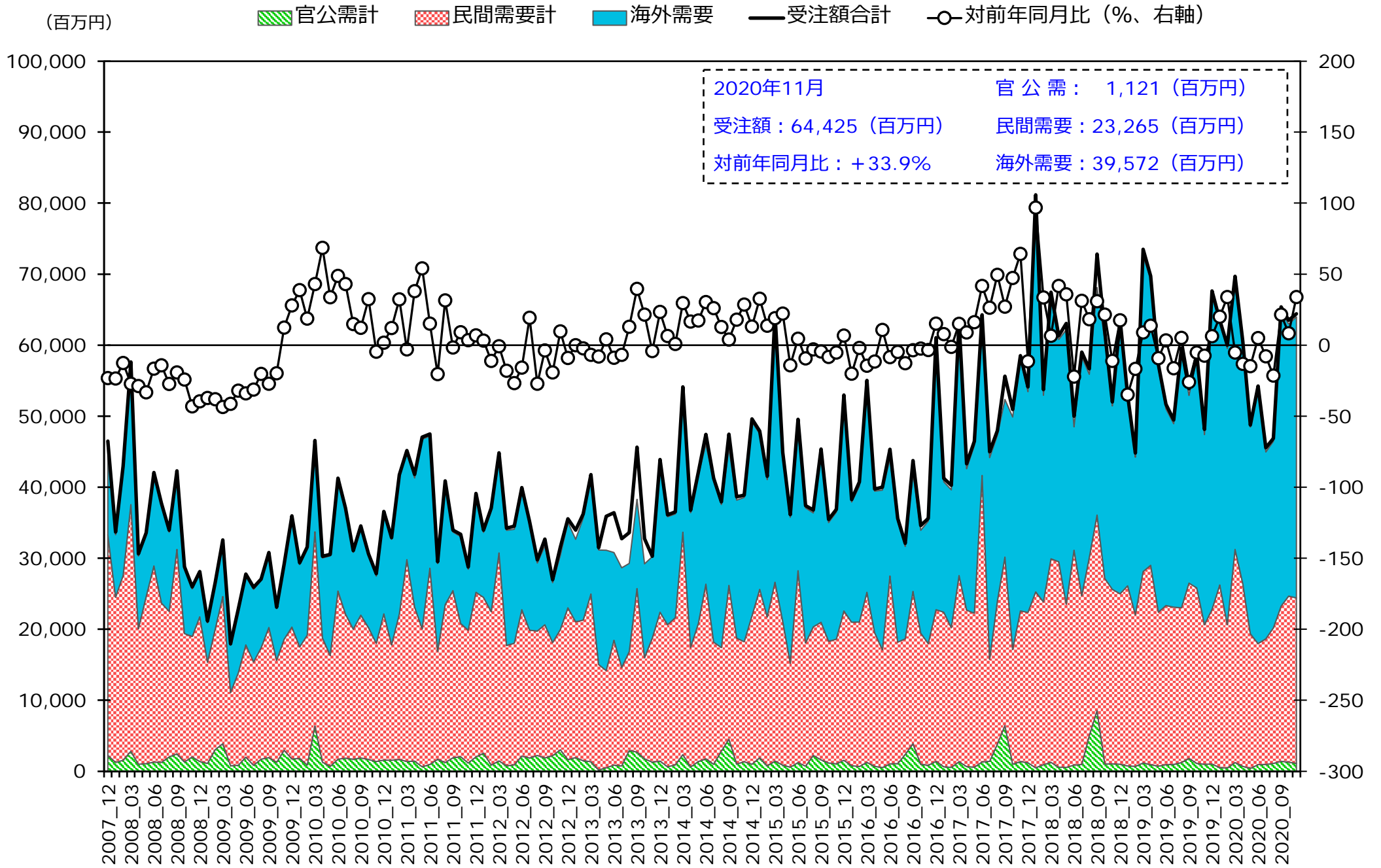
| 機械受注統計<br>電気計測器 | 官公需 |        |     |         |       |       |       |       |        |       |        |       |
|-----------------|-----|--------|-----|---------|-------|-------|-------|-------|--------|-------|--------|-------|
|                 | 運輸業 |        | 防衛省 |         | 国家公務  |       | 地方公務  |       | その他官公需 |       | 官公需計   |       |
|                 | 受注額 | 前年比    | 受注額 | 前年比     | 受注額   | 前年比   | 受注額   | 前年比   | 受注額    | 前年比   | 受注額    | 前年比   |
| 2019CY          | 2   | -86.7  | 349 | -18.1   | 1,005 | -79.3 | 7,849 | -0.1  | 3,136  | -65.4 | 12,341 | -44.5 |
| 2019FY          | 0   | -----  | 146 | -56.9   | 964   | -79.4 | 8,082 | 4.6   | 2,705  | -71.3 | 11,897 | -46.4 |
| 2019_10-12      | 0   | -----  | 81  | 478.6   | 119   | -61.5 | 2,344 | 1.0   | 570    | 45.8  | 3,114  | 2.1   |
| 2020_01-03      | 0   | -----  | 49  | -80.6   | 32    | -56.2 | 1,832 | 14.6  | 294    | -59.4 | 2,207  | -16.7 |
| 2020_04-06      | 0   | -----  | 44  | 4,300.0 | 21    | -92.5 | 1,546 | -15.7 | 442    | -0.2  | 2,053  | -19.7 |
| 2020_07-09      | 0   | -----  | 2   | -86.7   | 450   | -15.7 | 2,240 | 8.1   | 758    | -45.8 | 3,450  | -14.2 |
| 2020_09         | 0   | -----  | 0   | -100.0  | 274   | 39.1  | 721   | -4.6  | 400    | -53.4 | 1,395  | -23.2 |
| 2020_10         | 0   | -----  | 15  | -----   | 45    | -50.5 | 1,007 | 32.8  | 223    | -12.2 | 1,290  | 17.0  |
| 2020_11         | 0   | -----  | 16  | -69.8   | 25    | 733.3 | 889   | 24.9  | 191    | -17.3 | 1,121  | 12.2  |
| 2020_01~2020_11 | 0   | -100.0 | 126 | -60.7   | 573   | -41.5 | 7,514 | 7.7   | 1,908  | -37.5 | 10,121 | -10.7 |
| 2020_04~2020_11 | 0   | -----  | 77  | 11.6    | 541   | -40.4 | 5,682 | 5.7   | 1,614  | -30.6 | 7,914  | -8.8  |

(金額：百万円、前年比：前年同月比増減率%)

| 機械受注統計<br>電気計測器 | 海外需要    |         | 代理店   |       | 受注額合計   |         | 販売額     |         | 受注残高    |
|-----------------|---------|---------|-------|-------|---------|---------|---------|---------|---------|
|                 | 受注額     | 前年比     | 受注額   | 前年比   | 受注額     | 前年比     | 販売額     | 前年比     | 未月度残高   |
|                 | 2019CY  | 386,843 | -2.5  | 7,527 | -46.3   | 687,197 | -7.5    | 704,149 | -1.6    |
| 2019FY          | 406,997 | 10.3    | 7,481 | -45.5 | 709,152 | -0.3    | 700,603 | -2.1    | 175,715 |
| 2019_10-12      | 103,428 | 6.3     | 1,740 | -29.7 | 174,380 | -1.7    | 168,840 | -8.8    | 162,942 |
| 2020_01-03      | 113,016 | 21.7    | 2,087 | -2.2  | 193,196 | 12.8    | 180,418 | -1.9    | 175,715 |
| 2020_04-06      | 98,619  | -3.5    | 1,156 | -33.6 | 163,512 | -8.5    | 164,100 | -3.4    | 175,176 |
| 2020_07-09      | 94,136  | 6.5     | 1,591 | -16.8 | 157,808 | -3.1    | 169,383 | -6.6    | 163,739 |
| 2020_09         | 41,552  | 57.4    | 601   | -37.5 | 65,398  | 21.4    | 66,062  | -7.5    | 163,739 |
| 2020_10         | 38,283  | 18.6    | 547   | 0.6   | 63,507  | 8.3     | 57,075  | 3.9     | 170,182 |
| 2020_11         | 39,572  | 47.8    | 467   | -35.2 | 64,425  | 33.9    | 50,907  | -9.8    | 183,695 |
| 2020_01~2020_11 | 383,626 | 12.0    | 5,848 | -17.1 | 642,448 | 3.7     | 621,883 | -3.8    |         |
| 2020_04~2020_11 | 270,610 | 8.4     | 3,761 | -23.5 | 449,252 | 0.2     | 441,465 | -4.6    |         |

出典：「機械受注統計」（内閣府）（[https://www.esri.cao.go.jp/jp/stat/juchu/menu\\_juchu.html](https://www.esri.cao.go.jp/jp/stat/juchu/menu_juchu.html)）

# 電気計測器の受注額推移 (内閣府機械受注統計よりJEMIMAが加工作成)



出典：「機械受注統計」(内閣府) ([https://www.esri.cao.go.jp/jp/stat/juchu/menu\\_juchu.html](https://www.esri.cao.go.jp/jp/stat/juchu/menu_juchu.html))