

電気計測器の受注額推移

「機械受注統計」(内閣府) ([https://www.esri.cao.go.jp/jp/stat/juchu/menu\\_juchu.html](https://www.esri.cao.go.jp/jp/stat/juchu/menu_juchu.html)) をもとにJEMIMA作成  
 内閣府機械受注統計HPの公表資料ならびに調査結果利用上の注意をご確認の上でご利用ください。(金額：百万円、前年比：前年同月比増減率%)

| 機械受注統計<br>電気計測器 | 民 需   |       |      |       |                |       |        |       |           |       |         |       |
|-----------------|-------|-------|------|-------|----------------|-------|--------|-------|-----------|-------|---------|-------|
|                 | 製造業   |       |      |       |                |       |        |       |           |       |         |       |
|                 | 食品製造業 |       | 繊維工業 |       | パルプ・紙<br>・紙加工品 |       | 化学工業   |       | 石油製品・石灰製品 |       | 窯業・土石製品 |       |
|                 | 受注額   | 前年比   | 受注額  | 前年比   | 受注額            | 前年比   | 受注額    | 前年比   | 受注額       | 前年比   | 受注額     | 前年比   |
| 2019CY          | 4,182 | -10.9 | 719  | -16.7 | 4,523          | -3.1  | 27,162 | 7.3   | 4,489     | 28.6  | 1,466   | 13.9  |
| 2019FY          | 4,159 | -4.7  | 941  | 19.9  | 4,622          | 2.0   | 26,845 | 3.7   | 4,426     | 12.5  | 1,480   | 18.5  |
| 2019_04-06      | 1,122 | 5.8   | 255  | 26.2  | 1,350          | -0.1  | 6,800  | 7.2   | 781       | 34.7  | 339     | 73.0  |
| 2019_07-09      | 1,182 | -6.9  | 184  | -24.0 | 869            | -12.7 | 5,936  | 0.1   | 1,080     | 30.4  | 493     | 130.4 |
| 2019_10-12      | 951   | -14.2 | 131  | -31.8 | 1,116          | 11.7  | 6,646  | 14.0  | 1,112     | 10.2  | 280     | -42.3 |
| 2020_01-03      | 904   | -2.5  | 371  | 149.0 | 1,287          | 8.3   | 7,463  | -4.1  | 1,453     | -4.2  | 368     | 4.0   |
| 2020_01         | 283   | -6.0  | 56   | 60.0  | 259            | -18.8 | 1,760  | -14.5 | 400       | 23.1  | 60      | -21.1 |
| 2020_02         | 235   | -18.7 | 49   | -12.5 | 298            | -13.9 | 2,228  | -6.9  | 175       | -25.2 | 107     | 64.6  |
| 2020_03         | 386   | 14.5  | 266  | 358.6 | 730            | 39.6  | 3,475  | 4.4   | 878       | -8.3  | 201     | -5.6  |
| 2020_01~2020_03 | 904   | -2.5  | 371  | 149.0 | 1,287          | 8.3   | 7,463  | -4.1  | 1,453     | -4.2  | 368     | 4.0   |
| 2019_04~2020_03 | 4,159 | -4.7  | 941  | 19.9  | 4,622          | 2.0   | 26,845 | 3.7   | 4,426     | 12.5  | 1,480   | 18.5  |

(金額：百万円、前年比：前年同月比増減率%)

| 機械受注統計<br>電気計測器 | 民 需   |       |       |       |      |       |           |       |       |       |                   |       |
|-----------------|-------|-------|-------|-------|------|-------|-----------|-------|-------|-------|-------------------|-------|
|                 | 製造業   |       |       |       |      |       |           |       |       |       |                   |       |
|                 | 鉄鋼業   |       | 非鉄金属  |       | 金属製品 |       | はん用・生産用機械 |       | 業務用機械 |       | (内) 事務・サービス・娯楽用機械 |       |
|                 | 受注額   | 前年比   | 受注額   | 前年比   | 受注額  | 前年比   | 受注額       | 前年比   | 受注額   | 前年比   | 受注額               | 前年比   |
| 2019CY          | 3,486 | -5.4  | 1,504 | -15.8 | 330  | -64.9 | 19,741    | -19.6 | 1,933 | -7.2  | 336               | -1.2  |
| 2019FY          | 3,641 | -2.6  | 1,450 | -15.0 | 343  | -58.3 | 19,787    | -15.2 | 1,974 | -4.5  | 358               | 8.5   |
| 2019_04-06      | 893   | 35.1  | 429   | 3.6   | 66   | -73.2 | 5,595     | -14.3 | 482   | 20.8  | 137               | 73.4  |
| 2019_07-09      | 936   | -24.7 | 333   | -16.8 | 74   | -82.4 | 4,185     | -26.2 | 649   | -8.8  | 50                | -43.8 |
| 2019_10-12      | 755   | -19.1 | 363   | -29.2 | 106  | 47.2  | 4,661     | -20.3 | 365   | -29.7 | 51                | -20.3 |
| 2020_01-03      | 1,057 | 17.2  | 325   | -14.2 | 97   | 15.5  | 5,346     | 0.9   | 478   | 9.4   | 120               | 22.4  |
| 2020_01         | 277   | 12.1  | 102   | -12.8 | 16   | -30.4 | 1,999     | 17.8  | 105   | -0.9  | 27                | -22.9 |
| 2020_02         | 173   | -19.2 | 129   | -3.0  | 15   | -21.1 | 1,341     | -27.4 | 133   | -8.9  | 54                | 86.2  |
| 2020_03         | 607   | 37.6  | 94    | -27.1 | 66   | 57.1  | 2,006     | 14.3  | 240   | 29.7  | 39                | 14.7  |
| 2020_01~2020_03 | 1,057 | 17.2  | 325   | -14.2 | 97   | 15.5  | 5,346     | 0.9   | 478   | 9.4   | 120               | 22.4  |
| 2019_04~2020_03 | 3,641 | -2.6  | 1,450 | -15.0 | 343  | -58.3 | 19,787    | -15.2 | 1,974 | -4.5  | 358               | 8.5   |

(金額：百万円、前年比：前年同月比増減率%)

| 機械受注統計<br>電気計測器 | 民 需    |       |        |       |          |       |     |       |          |       |        |       |         |       |
|-----------------|--------|-------|--------|-------|----------|-------|-----|-------|----------|-------|--------|-------|---------|-------|
|                 | 製造業    |       |        |       |          |       |     |       |          |       |        |       |         |       |
|                 | 電気機械   |       | 情報通信機械 |       | 自動車・同付属品 |       | 造船業 |       | その他輸送用機械 |       | その他製造業 |       | 製造業計    |       |
|                 | 受注額    | 前年比   | 受注額    | 前年比   | 受注額      | 前年比   | 受注額 | 前年比   | 受注額      | 前年比   | 受注額    | 前年比   | 受注額     | 前年比   |
| 2019CY          | 14,133 | -65.6 | 12,120 | -33.2 | 17,711   | -21.3 | 803 | 37.3  | 121      | 51.3  | 4,515  | 22.5  | 118,938 | -25.4 |
| 2019FY          | 13,227 | -63.4 | 13,631 | -8.8  | 17,003   | -24.6 | 713 | 22.9  | 125      | 45.3  | 5,234  | 38.7  | 119,601 | -20.6 |
| 2019_04-06      | 4,239  | -73.6 | 3,374  | -19.6 | 3,718    | -28.3 | 272 | 166.7 | 17       | 6.3   | 997    | 18.4  | 30,729  | -30.8 |
| 2019_07-09      | 2,551  | -74.9 | 3,308  | -23.3 | 5,038    | -20.7 | 110 | 14.6  | 35       | 45.8  | 1,374  | 65.9  | 28,337  | -28.6 |
| 2019_10-12      | 2,207  | -54.0 | 2,898  | -25.7 | 4,295    | -32.5 | 278 | 16.3  | 39       | 143.8 | 972    | 4.4   | 27,175  | -19.5 |
| 2020_01-03      | 4,230  | -17.6 | 4,051  | 59.5  | 3,952    | -15.2 | 53  | -62.9 | 34       | 13.3  | 1,891  | 61.3  | 33,360  | 2.0   |
| 2020_01         | 1,093  | -44.1 | 1,406  | 109.5 | 1,281    | -19.6 | 22  | -31.3 | 10       | 42.9  | 619    | 115.7 | 9,748   | -1.1  |
| 2020_02         | 794    | -49.1 | 856    | 1.1   | 1,146    | -40.3 | 15  | -63.4 | 14       | -17.6 | 417    | 86.2  | 8,125   | -21.5 |
| 2020_03         | 2,343  | 44.6  | 1,789  | 75.0  | 1,525    | 33.1  | 16  | -77.1 | 10       | 66.7  | 855    | 29.3  | 15,487  | 24.0  |
| 2020_01~2020_03 | 4,230  | -17.6 | 4,051  | 59.5  | 3,952    | -15.2 | 53  | -62.9 | 34       | 13.3  | 1,891  | 61.3  | 33,360  | 2.0   |
| 2019_04~2020_03 | 13,227 | -63.4 | 13,631 | -8.8  | 17,003   | -24.6 | 713 | 22.9  | 125      | 45.3  | 5,234  | 38.7  | 119,601 | -20.6 |

(金額：百万円、前年比：前年同月比増減率%)

| 機械受注統計<br>電気計測器 | 民 需  |         |                  |       |       |       |       |       |         |       |       |       |         |       |
|-----------------|------|---------|------------------|-------|-------|-------|-------|-------|---------|-------|-------|-------|---------|-------|
|                 | 非製造業 |         |                  |       |       |       |       |       |         |       |       |       |         |       |
|                 | 農林漁業 |         | 鉱業・採石業・<br>砂利採取業 |       | 建設業   |       | 電力業   |       | 運輸業・郵便業 |       | 通信業   |       | 卸売業・小売業 |       |
|                 | 受注額  | 前年比     | 受注額              | 前年比   | 受注額   | 前年比   | 受注額   | 前年比   | 受注額     | 前年比   | 受注額   | 前年比   | 受注額     | 前年比   |
| 2019CY          | 62   | 51.2    | 1,636            | -1.9  | 1,448 | -1.4  | 5,065 | 5.2   | 479     | -39.1 | 3,991 | 50.5  | 1,885   | -28.8 |
| 2019FY          | 83   | 144.1   | 1,527            | -12.3 | 1,417 | -5.2  | 4,760 | -4.9  | 604     | -28.9 | 3,751 | 5.0   | 1,936   | -26.4 |
| 2019_04-06      | 8    | 14.3    | 425              | -1.6  | 368   | -8.5  | 1,102 | 10.4  | 142     | -62.1 | 432   | 64.3  | 379     | -19.0 |
| 2019_07-09      | 30   | 200.0   | 298              | -32.7 | 325   | -5.5  | 1,269 | 30.2  | 53      | -83.6 | 889   | 31.3  | 537     | -47.6 |
| 2019_10-12      | 21   | 50.0    | 360              | 14.6  | 379   | 1.9   | 1,124 | -23.2 | 164     | 412.5 | 937   | 4.0   | 419     | -28.6 |
| 2020_01-03      | 24   | 700.0   | 444              | -19.7 | 345   | -8.2  | 1,265 | -19.4 | 245     | 104.2 | 1,493 | -13.8 | 601     | 9.3   |
| 2020_01         | 20   | 1,900.0 | 70               | -56.0 | 107   | -18.3 | 456   | 2.9   | 157     | 946.7 | 862   | -10.2 | 145     | 27.2  |
| 2020_02         | 1    | -50.0   | 78               | -26.4 | 79    | -42.3 | 311   | -51.8 | 26      | -38.1 | 520   | 28.1  | 147     | 0.0   |
| 2020_03         | 3    | -----   | 296              | 2.8   | 159   | 47.2  | 498   | 3.3   | 62      | -1.6  | 111   | -69.8 | 309     | 6.9   |
| 2020_01~2020_03 | 24   | 700.0   | 444              | -19.7 | 345   | -8.2  | 1,265 | -19.4 | 245     | 104.2 | 1,493 | -13.8 | 601     | 9.3   |
| 2019_04~2020_03 | 83   | 144.1   | 1,527            | -12.3 | 1,417 | -5.2  | 4,760 | -4.9  | 604     | -28.9 | 3,751 | 5.0   | 1,936   | -26.4 |

(金額：百万円、前年比：前年同月比増減率%)

| 機械受注統計<br>電気計測器 | 民需<br>非製造業 |        |      |       |         |       |       |       |         |      |         |      |         |       |
|-----------------|------------|--------|------|-------|---------|-------|-------|-------|---------|------|---------|------|---------|-------|
|                 | 金融業・保険業    |        | 不動産業 |       | 情報サービス業 |       | リース業  |       | その他非製造業 |      | 非製造業計   |      | 民間需要合計  |       |
|                 | 受注額        | 前年比    | 受注額  | 前年比   | 受注額     | 前年比   | 受注額   | 前年比   | 受注額     | 前年比  | 受注額     | 前年比  | 受注額     | 前年比   |
| 2019CY          | 7          | 250.0  | 359  | -16.7 | 690     | 34.5  | 2,386 | -57.4 | 143,540 | 10.8 | 161,548 | 7.6  | 280,486 | -9.4  |
| 2019FY          | 4          | -20.0  | 381  | 2.4   | 592     | -3.6  | 2,406 | -50.7 | 145,715 | 7.9  | 163,176 | 4.4  | 282,777 | -7.8  |
| 2019_04-06      | 0          | -----  | 90   | 9.8   | 96      | -20.7 | 569   | -31.4 | 37,855  | 12.1 | 41,466  | 9.8  | 72,195  | -12.1 |
| 2019_07-09      | 4          | 100.0  | 77   | -14.4 | 181     | 69.2  | 499   | -66.7 | 36,099  | 15.8 | 40,261  | 9.8  | 68,598  | -10.2 |
| 2019_10-12      | 0          | -----  | 95   | -7.8  | 133     | 25.5  | 563   | -68.7 | 34,728  | -1.4 | 38,923  | -4.8 | 66,098  | -11.5 |
| 2020_01-03      | 0          | -----  | 119  | 22.7  | 182     | -35.0 | 775   | 2.6   | 37,033  | 6.2  | 42,526  | 4.0  | 75,886  | 3.1   |
| 2020_01         | 0          | -100.0 | 25   | 25.0  | 27      | -55.7 | 103   | 4.0   | 13,976  | 3.7  | 15,948  | 3.0  | 25,696  | 1.4   |
| 2020_02         | 0          | -----  | 32   | -30.4 | 36      | -26.5 | 187   | -53.3 | 10,619  | 18.1 | 12,036  | 9.7  | 20,161  | -5.5  |
| 2020_03         | 0          | -100.0 | 62   | 100.0 | 119     | -30.0 | 485   | 89.5  | 12,438  | 0.5  | 14,542  | 0.7  | 30,029  | 11.5  |
| 2020_01~2020_03 | 0          | -100.0 | 119  | 22.7  | 182     | -35.0 | 775   | 2.6   | 37,033  | 6.2  | 42,526  | 4.0  | 75,886  | 3.1   |
| 2019_04~2020_03 | 4          | -20.0  | 381  | 2.4   | 592     | -3.6  | 2,406 | -50.7 | 145,715 | 7.9  | 163,176 | 4.4  | 282,777 | -7.8  |

(金額：百万円、前年比：前年同月比増減率%)

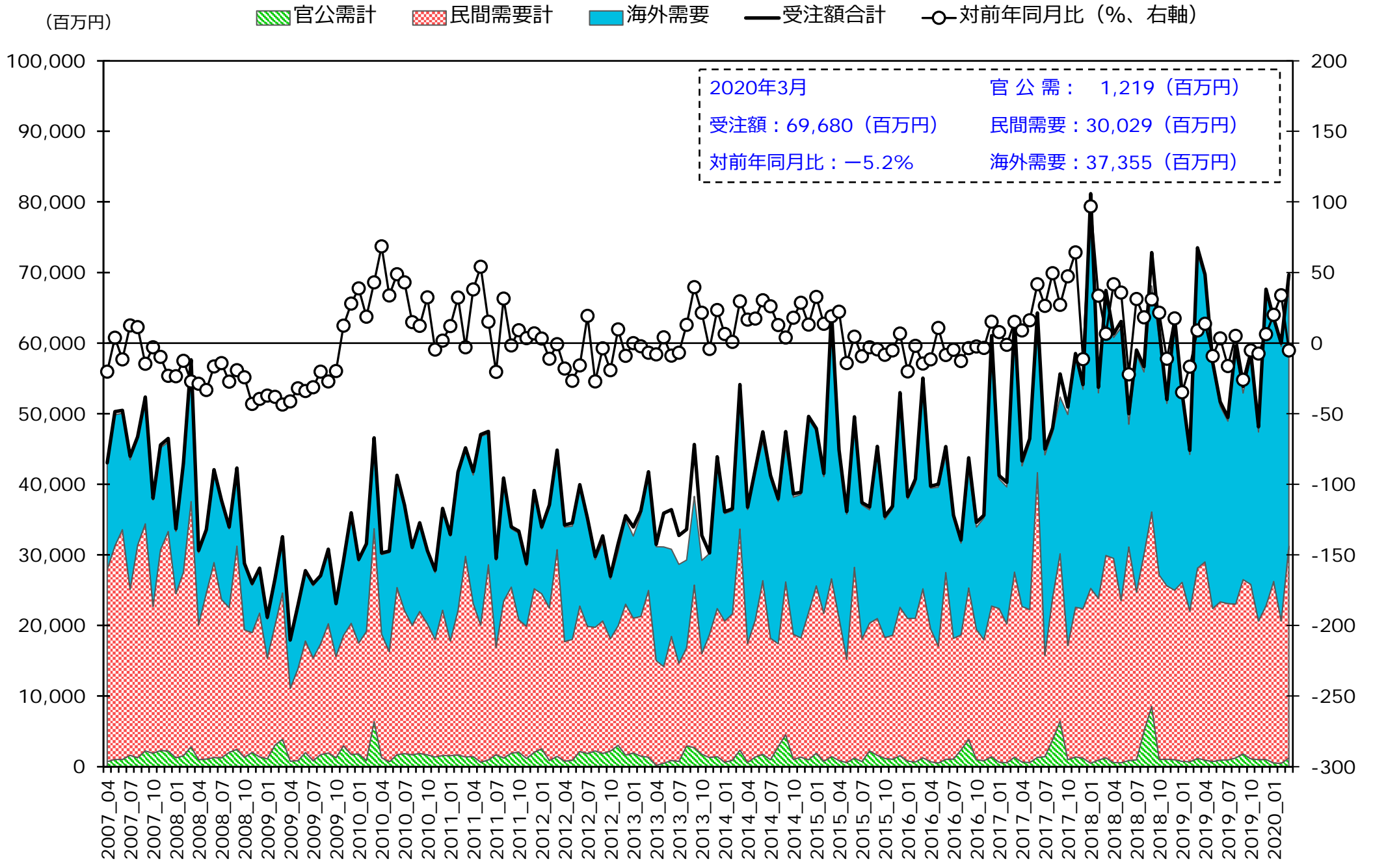
| 機械受注統計<br>電気計測器 | 官公需 |        |     |       |       |        |       |       |        |       |        |       |
|-----------------|-----|--------|-----|-------|-------|--------|-------|-------|--------|-------|--------|-------|
|                 | 運輸業 |        | 防衛省 |       | 国家公務  |        | 地方公務  |       | その他官公需 |       | 官公需計   |       |
|                 | 受注額 | 前年比    | 受注額 | 前年比   | 受注額   | 前年比    | 受注額   | 前年比   | 受注額    | 前年比   | 受注額    | 前年比   |
| 2019CY          | 2   | -86.7  | 349 | -18.1 | 1,005 | -79.3  | 7,849 | -0.1  | 3,136  | -65.4 | 12,341 | -44.5 |
| 2019FY          | 0   | -----  | 146 | -56.9 | 964   | -79.4  | 8,082 | 4.6   | 2,705  | -71.3 | 11,897 | -46.4 |
| 2019_04-06      | 0   | -----  | 1   | -85.7 | 279   | -7.3   | 1,834 | 27.5  | 443    | 74.4  | 2,557  | 27.9  |
| 2019_07-09      | 0   | -----  | 15  | -77.3 | 534   | -86.7  | 2,072 | -12.7 | 1,398  | -82.7 | 4,019  | -72.3 |
| 2019_10-12      | 0   | -----  | 81  | 478.6 | 119   | -61.5  | 2,344 | 1.0   | 570    | 45.8  | 3,114  | 2.1   |
| 2020_01-03      | 0   | -----  | 49  | -80.6 | 32    | -56.2  | 1,832 | 14.6  | 294    | -59.4 | 2,207  | -16.7 |
| 2020_01         | 0   | -----  | 33  | -85.9 | -13   | -156.5 | 398   | -1.2  | 111    | 5.7   | 529    | -30.8 |
| 2020_02         | 0   | -----  | 14  | 0.0   | 30    | -34.8  | 347   | 20.9  | 68     | -81.1 | 459    | -35.0 |
| 2020_03         | 0   | -100.0 | 2   | -50.0 | 15    | 275.0  | 1,087 | 19.6  | 115    | -55.9 | 1,219  | 3.3   |
| 2020_01~2020_03 | 0   | -100.0 | 49  | -80.6 | 32    | -56.2  | 1,832 | 14.6  | 294    | -59.4 | 2,207  | -16.7 |
| 2019_04~2020_03 | 0   | -100.0 | 146 | -56.9 | 964   | -79.4  | 8,082 | 4.6   | 2,705  | -71.3 | 11,897 | -46.4 |

(金額：百万円、前年比：前年同月比増減率%)

| 機械受注統計<br>電気計測器 | 海外需要    |       | 代理店   |       | 受注額合計   |       | 販売額     |       | 受注残高    |
|-----------------|---------|-------|-------|-------|---------|-------|---------|-------|---------|
|                 | 受注額     | 前年比   | 受注額   | 前年比   | 受注額     | 前年比   | 販売額     | 前年比   | 末月度残高   |
| 2019CY          | 386,843 | -2.5  | 7,527 | -46.3 | 687,197 | -7.5  | 704,149 | -1.6  | 162,942 |
| 2019FY          | 406,997 | 10.3  | 7,481 | -45.5 | 709,152 | -0.3  | 700,603 | -2.1  | 175,715 |
| 2019_04-06      | 102,151 | 17.0  | 1,742 | -40.9 | 178,645 | 2.4   | 169,949 | 0.9   | 178,436 |
| 2019_07-09      | 88,402  | -3.3  | 1,912 | -69.0 | 162,931 | -13.6 | 181,396 | 1.7   | 157,428 |
| 2019_10-12      | 103,428 | 6.3   | 1,740 | -29.7 | 174,380 | -1.7  | 168,840 | -8.8  | 162,942 |
| 2020_01-03      | 113,016 | 21.7  | 2,087 | -2.2  | 193,196 | 12.8  | 180,418 | -1.9  | 175,715 |
| 2020_01         | 36,769  | 40.1  | 535   | -12.2 | 63,529  | 20.0  | 47,768  | -13.0 | 178,701 |
| 2020_02         | 38,892  | 75.3  | 475   | -18.8 | 59,987  | 33.9  | 52,131  | 3.5   | 186,550 |
| 2020_03         | 37,355  | -15.9 | 1,077 | 14.7  | 69,680  | -5.2  | 80,519  | 2.3   | 175,715 |
| 2020_01~2020_03 | 113,016 | 21.7  | 2,087 | -2.2  | 193,196 | 12.8  | 180,418 | -1.9  |         |
| 2019_04~2020_03 | 406,997 | 10.3  | 7,481 | -45.5 | 709,152 | -0.3  | 700,603 | -2.1  |         |

出典：「機械受注統計」（内閣府）（[https://www.esri.cao.go.jp/stat/juchu/menu\\_juchu.html](https://www.esri.cao.go.jp/stat/juchu/menu_juchu.html)）

# 電気計測器の受注額推移 (内閣府機械受注統計よりJEMIMAが加工作成)



出典 : 「機械受注統計」 (内閣府) ([https://www.esri.cao.go.jp/jp/stat/juchu/menu\\_juchu.html](https://www.esri.cao.go.jp/jp/stat/juchu/menu_juchu.html))