

CURRENT PRODUCTION STATISTICS data
Electric Measuring Instruments

The notation of "%" indicates the rate of change in the same period of the previous year.

VALUE UNIT: Million yen

	TOTAL													
	Electrical Meters						Electric test and measuring equipment							
	VALUE		%		VALUE		%		Quantity(n)		VALUE		%	
2017CY	422,949	10.2	99,787	-4.0	4,456	2.7	13,576,189	95,331	-4.3	175,620	28.9	543,204	12,101	-1.8
2016FY	393,070	-1.0	104,636	14.4	4,371	-3.3	14,129,468	100,265	15.3	144,526	-6.9	520,054	11,928	-8.2
2017/01~03	115,905	8.7	26,249	2.7	1,126	3.1	3,610,831	25,123	2.7	46,930	21.6	128,188	3,110	-11.1
2017/04~06	96,952	13.3	27,134	8.7	996	0.4	3,706,877	26,138	9.0	38,421	29.0	133,652	2,853	-7.7
2017/07~09	101,429	5.5	24,173	-10.0	1,036	1.9	3,265,646	23,137	-10.5	41,795	23.2	125,594	2,995	3.8
2017/10~12	108,663	13.8	22,231	-16.3	1,298	5.0	2,992,835	20,933	-17.3	48,474	43.0	155,770	3,143	10.6
2017/10	36,052	25.4	7,764	-12.5	431	0.9	1,046,520	7,333	-13.2	15,834	62.3	58,929	1,115	17.9
2017/11	34,703	10.4	7,139	-20.2	438	3.8	974,891	6,701	-21.4	15,247	44.0	52,324	1,014	5.8
2017/12	37,908	7.4	7,328	-16.0	429	10.9	971,424	6,899	-17.2	17,393	28.4	44,517	1,014	8.1
2017/01~2017/12	422,949	10.2	99,787	-4.0	4,456	2.7	13,576,189	95,331	-4.3	175,620	28.9	543,204	12,101	-1.8
2017/04~2017/12	307,044	10.8	73,538	-6.2	3,330	2.6	9,965,358	70,208	-6.6	128,690	31.9	415,016	8,991	2.0

	Electric test and measuring equipment														
	Audio communication measuring instruments			Semiconductor characteristic measuring			Logic IC testers			IC testing peripheral equipment			Other semiconductor and IC measuring instrument		
	Quantity(n)	VALUE	%	VALUE	%	Quantity(n)	VALUE	%	Quantity(n)	VALUE	%	Quantity(n)	VALUE	%	
2017CY	11,764	19,862	-6.3	95,094	61.9	480	32,389	52.9	815	7,078	66.1	1,622	55,627	67.1	
2016FY	12,249	21,158	-14.1	66,097	-5.2	417	24,340	8.3	667	4,689	5.1	1,139	37,068	-13.4	
2017/01~03	3,985	6,429	-0.7	23,699	45.1	129	7,779	68.3	205	1,298	49.2	365	14,622	34.9	
2017/04~06	2,472	3,806	-26.5	20,418	91.4	115	7,602	51.6	262	1,822	48.9	406	10,994	148.0	
2017/07~09	2,439	3,906	-13.0	22,925	39.6	105	6,704	43.5	126	1,691	36.9	387	14,530	38.2	
2017/10~12	2,868	5,721	13.1	28,052	83.3	131	10,304	49.8	222	2,267	143.2	464	15,481	106.4	
2017/10	1,238	1,632	36.6	9,631	101.9	60	4,322	89.9	100	993	236.6	96	4,316	96.3	
2017/11	792	883	-44.1	9,975	114.4	38	3,191	70.1	62	836	130.3	223	5,948	146.5	
2017/12	838	3,206	40.3	8,446	43.5	33	2,791	2.4	60	438	59.9	145	5,217	80.7	
2017/01~2017/12	11,764	19,862	-6.3	95,094	61.9	480	32,389	52.9	815	7,078	66.1	1,622	55,627	67.1	
2017/04~2017/12	7,779	13,433	-8.8	71,395	68.4	351	24,610	48.6	610	5,780	70.5	1,257	41,005	82.7	

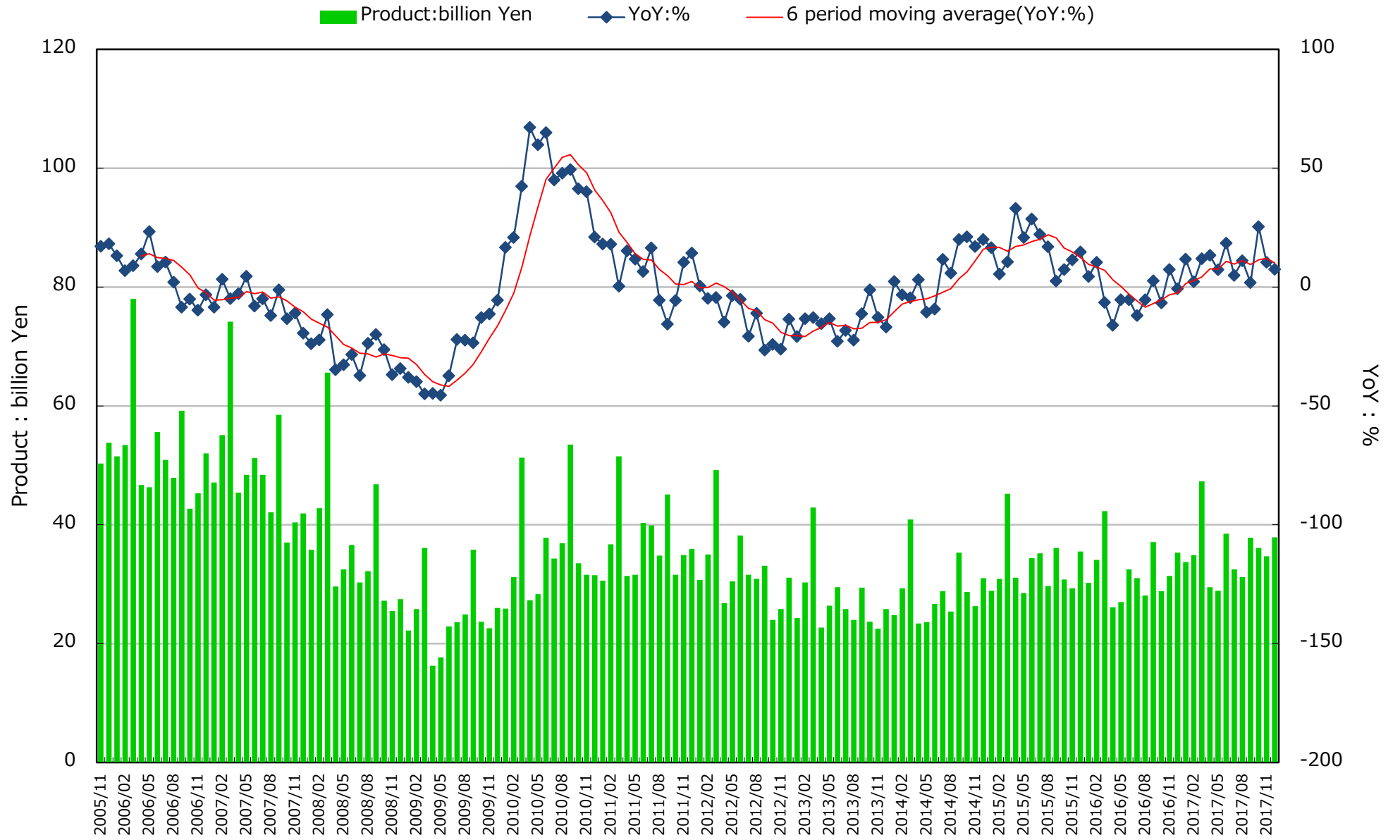
	Industrial for measuring equipment instruments												
	miscellaneous test and measuring equipment			Detector, transducer and transmitters			Pressure gauge			Flow gauge			
	Quantity(n)	VALUE	%	Quantity(n)	VALUE	%	Quantity(n)	VALUE	%	Quantity(n)	VALUE	%	
2017CY	48,563	10.5	123,515	4.1	1,281,241	13,027	8.9	312,674	9,691	-1.2	102,699	9,135	-3.1
2016FY	45,343	-5.2	119,184	-5.6	1,059,065	12,202	-2.3	284,947	9,276	-15.1	95,792	9,463	2.9
2017/01~03	13,692	11.3	35,238	1.4	303,076	3,299	7.8	68,728	2,343	-18.5	27,116	3,187	1.2
2017/04~06	11,344	4.5	27,183	5.3	305,216	3,241	8.6	79,791	2,394	7.3	24,583	1,722	11.7
2017/07~09	11,969	18.3	29,465	0.9	323,858	3,163	0.6	80,237	2,435	-0.1	24,186	1,929	-15.1
2017/10~12	11,558	8.2	31,629	9.3	349,091	3,324	19.8	83,918	2,519	11.3	26,814	2,297	-6.8
2017/10	3,456	21.3	10,645	26.7	138,150	1,143	21.0	26,431	786	3.0	8,899	722	3.1
2017/11	3,375	-0.8	10,197	3.6	103,274	1,135	19.1	29,261	844	12.2	8,690	782	-5.6
2017/12	4,727	6.7	10,787	0.9	107,667	1,046	19.3	28,226	889	18.7	9,225	793	-15.3
2017/01~2017/12	48,563	10.5	123,515	4.1	1,281,241	13,027	8.9	312,674	9,691	-1.2	102,699	9,135	-3.1
2017/04~2017/12	34,871	10.2	88,277	5.2	978,165	9,728	9.3	243,946	7,348	6.0	75,583	5,948	-5.2

	Industrial for measuring equipment instruments												
	Detector, transducer and transmitters			Receiving instruments			Analyzer for processing			Monitoring and control systems for processing			
	Quantity(n)	VALUE	%	Quantity(n)	VALUE	%	Quantity(n)	VALUE	%	Quantity(n)	VALUE	%	
2017CY	131,481	14,484	5.7	9,718	7.9	794,210	16,440	2.8	24,495	13,687	1.7	15,925	-6.2
2016FY	128,191	13,677	0.8	9,075	-8.2	774,256	16,100	7.0	22,838	13,352	2.1	16,908	-22.5
2017/01~03	31,744	3,460	-0.8	3,028	2.4	199,956	4,096	2.7	6,801	4,128	-2.6	5,563	-1.1
2017/04~06	32,119	3,556	0.9	1,838	19.2	197,632	3,989	4.6	5,581	2,545	3.5	3,350	-9.8
2017/07~09	33,817	3,739	15.5	2,190	4.0	182,760	3,965	-4.3	5,707	3,652	16.6	3,019	-24.7
2017/10~12	33,801	3,729	7.9	2,662	11.0	213,862	4,390	8.5	6,406	3,362	-7.5	3,993	10.2
2017/10	10,358	1,199	26.6	955	37.4	74,198	1,467	9.2	2,039	1,038	0.8	1,430	72.1
2017/11	11,700	1,287	-5.9	768	-2.4	63,569	1,374	1.4	2,146	1,107	-14.5	1,289	13.4
2017/12	11,743	1,243	8.8	939	2.4	76,095	1,549	15.0	2,221	1,217	-7.2	1,274	-23.0
2017/01~2017/12	131,481	14,484	5.7	9,718	7.9	794,210	16,440	2.8	24,495	13,687	1.7	15,925	-6.2
2017/04~2017/12	99,737	11,024	7.9	6,690	10.6	594,254	12,344	2.8	17,694	9,559	3.6	10,362	-8.7

	Industrial for measuring equipment instruments						Radiation instruments			Monitoring instruments for environmental quality			
	Monitoring and control systems for processing			Miscellaneous industrial measuring equipment instrument for process automation									
	Quantity(n)	VALUE	%	Quantity(n)	VALUE	%	Quantity(n)	VALUE	%	Quantity(n)	VALUE	%	
2017CY	4,153	9,793	-10.9	6,132	2.4	21,141	15.1	362,226	5,666	-32.8	45,956	18,361	11.3
2016FY	5,787	10,816	-28.7	6,092	-8.6	19,131	-5.1	392,847	7,640	-14.8	43,574	17,084	11.0
2017/01~03	2,483	3,749	-4.3	1,814	6.2	6,134	14.2	114,100	2,591	-23.5	12,509	4,897	13.6
2017/04~06	524	1,940	-19.2	1,410	7.3	4,548	13.8	23,881	427	-63.9	10,301	3,787	-0.3
2017/07~09	474	1,508	-41.0	1,511	4.1	5,373	13.6	89,235	1,498	-30.4	11,432	4,498	12.4
2017/10~12	672	2,596	23.1	1,397	-7.7	5,086	19.1	135,010	1,150	-32.9	11,714	5,179	18.0
2017/10	129	802	96.6	628	48.5	1,638	42.8	24,358	276	-41.4	3,447	1,533	23.6
2017/11	220	910	61.9	379	-34.1	1,611	17.5	57,176	272	-55.0	4,141	1,848	27.9
2017/12	323	884	-22.4	390	-24.3	1,837	4.7	53,476	602	-5.5	4,126	1,798	5.6
2017/01~2017/12	4,153	9,793	-10.9	6,132	2.4	21,141	15.1	362,226	5,666	-32.8	45,956	18,361	11.3
2017/04~2017/12	1,670	6,044	-14.5	4,318	0.9	15,007	15.5	248,126	3,075	-39.1	33,447	13,464	10.5

Sources: CURRENT PRODUCTION STATISTICS (Japan Ministry of Economy, Trade and Industry) (<http://www.meti.go.jp/statistics/index.html>)

CURRENT PRODUCTION STATISTICS data:Electric Measuring Instruments



Sources: CURRENT PRODUCTION STATISTICS (Japan Ministry of Economy, Trade and Industry) [<http://www.meti.go.jp/statistics/index.html>]