

CURRENT PRODUCTION STATISTICS data

Electric Measuring Instruments

The notation of "%" indicates the rate of change in the same period of the previous year.

VALUE UNIT: Million yen

	TOTAL													
	Electrical Meters						Electric test and measuring equipment							
	VALUE		%		VALUE		%		Quantity(n)		VALUE		%	
2018CY	463,326	8.9	83,549	-19.3	3,188	-28.5	11,803,926	80,361	-18.9	219,821	25.7	668,565	13,254	21.2
2018FY	465,508	10.5	83,103	-12.2	3,162	-23.2	12,228,644	79,941	-11.7	223,225	25.1	648,352	13,146	15.2
2018/10~12	123,427	13.4	22,114	-0.5	888	-31.6	3,353,012	21,226	1.4	62,353	27.7	170,171	3,462	21.0
2019/01~03	117,175	1.9	20,686	-2.1	763	-3.3	3,286,576	19,923	-2.1	53,631	6.8	148,432	3,185	-3.3
2019/04~06	97,647	-6.7	18,430	-7.8	715	1.3	3,020,428	17,715	-8.1	45,915	-4.3	129,827	2,950	-9.3
2019/07~09	100,590	-16.3	18,101	-10.9	717	-10.9	2,959,305	17,384	-10.9	45,024	-24.0	143,879	3,093	-4.8
2019/09	36,713	-10.7	6,319	-6.8	261	-17.9	1,024,810	6,058	-6.2	16,357	-17.1	51,315	958	-11.0
2019/10	34,328	-15.7	5,769	-22.6	280	-3.4	967,412	5,489	-23.4	16,463	-19.8	53,821	1,115	-9.9
2019/11	33,856	-19.1	5,822	-23.3	268	-12.7	995,542	5,554	-23.7	15,805	-24.2	52,682	1,011	-12.2
2019/01~2019/11	383,596	-9.2	68,808	-10.0	2,743	-5.3	11,229,263	66,065	-10.2	176,838	-11.1	528,641	11,354	-6.8
2019/04~2019/11	266,421	-13.4	48,122	-13.1	1,980	-6.1	7,942,687	46,142	-13.3	123,207	-17.1	380,209	8,169	-8.1

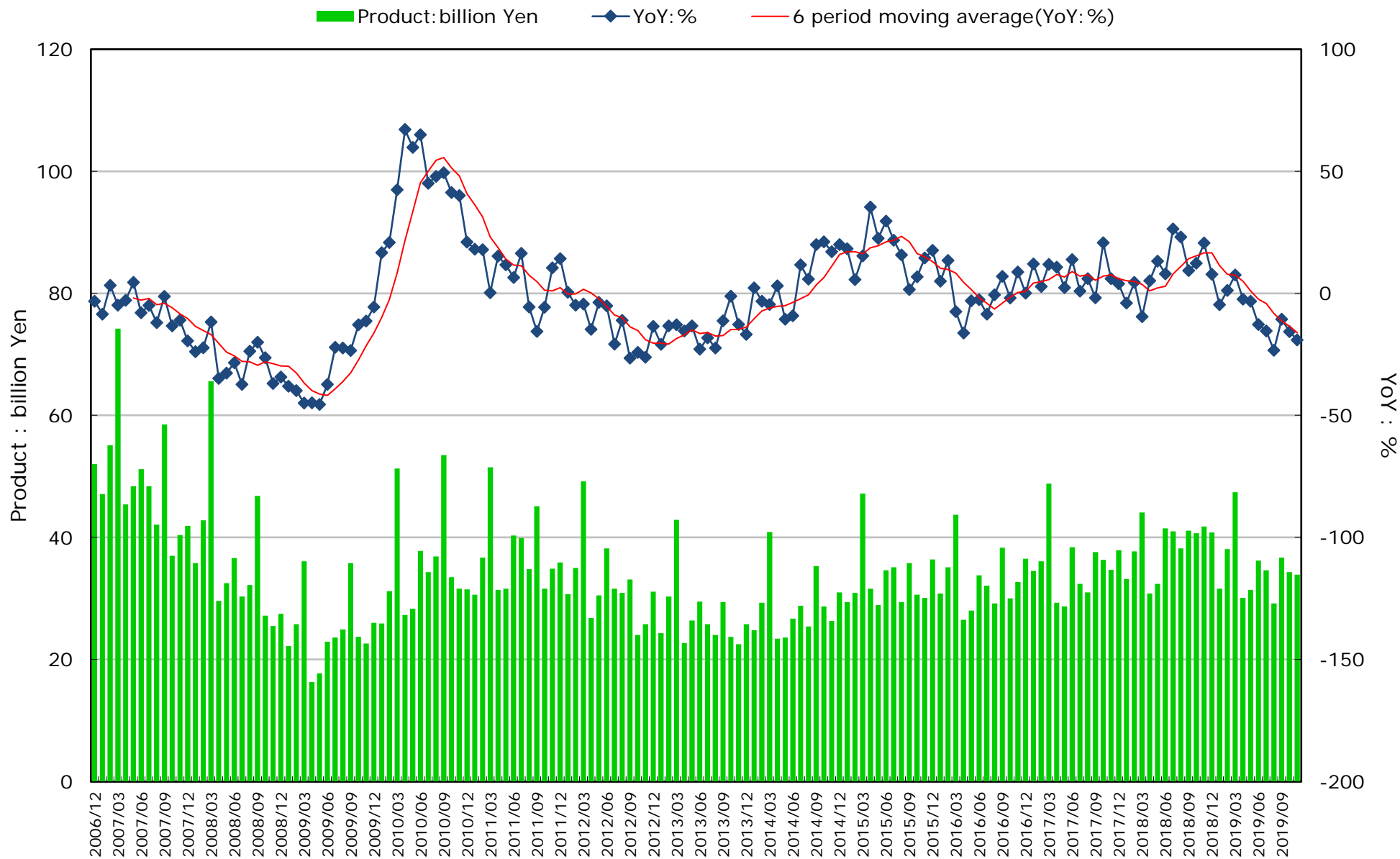
	Electric test and measuring equipment													
	Audio communication measuring instruments			Semiconductor characteristic measuring						IC testing peripheral equipment			Other semiconductor and IC measuring instrument	
	Quantity(n)	VALUE	%	VALUE	%	Quantity(n)	VALUE	%	Quantity(n)	VALUE	%	Quantity(n)	VALUE	%
2018CY	16,610	13,986	-29.8	143,233	50.8	613	48,558	49.9	905	7,262	2.6	2,106	87,413	57.5
2018FY	17,475	12,460	-33.8	146,528	46.7	700	56,067	61.1	908	7,099	-4.3	2,125	83,362	44.5
2018/10~12	3,916	3,124	-45.9	42,605	51.9	186	14,450	40.2	208	1,880	-17.1	546	26,275	69.7
2019/01~03	4,721	3,816	-28.6	31,947	11.5	207	17,707	73.6	175	1,477	-9.9	434	12,763	-24.1
2019/04~06	3,910	3,243	17.9	28,109	-9.0	179	16,541	66.7	97	644	-67.8	473	10,924	-42.4
2019/07~09	4,490	3,977	43.6	26,275	-36.0	93	9,052	-35.3	95	1,225	-29.6	597	15,998	-36.9
2019/09	1,607	1,713	46.7	9,155	-29.5	26	2,781	-35.4	35	447	-53.7	226	5,927	-23.3
2019/10	1,399	1,220	29.4	9,932	-29.1	41	3,741	-10.9	42	518	-13.2	137	5,673	-38.4
2019/11	1,893	1,624	53.5	9,286	-37.1	25	1,937	-59.8	42	471	-13.1	129	6,878	-26.8
2019/01~2019/11	16,413	13,880	7.9	105,549	-18.4	545	48,978	13.6	451	4,335	-33.5	1,770	52,236	-34.5
2019/04~2019/11	11,692	10,064	33.8	73,602	-26.9	338	31,271	-5.0	276	2,858	-41.4	1,336	39,473	-37.3

	Industrial for measuring equipment instruments													
	miscellaneous test and measuring equipment		Detector, transducer and transmitters						Pressure gauge			Flow gauge		
	VALUE	%	VALUE	%	Quantity(n)	VALUE	%	Quantity(n)	VALUE	%	Quantity(n)	VALUE	%	
2018CY	49,348	0.4	133,478	8.4	1,238,284	13,419	5.7	279,745	9,650	-0.4	110,382	9,297	1.8	
2018FY	51,091	5.7	133,592	8.5	1,199,281	13,158	3.3	280,777	9,689	-0.5	103,205	9,458	5.2	
2018/10~12	13,162	8.5	32,856	4.3	306,033	3,251	1.9	69,520	2,529	0.4	22,520	2,362	2.8	
2019/01~03	14,683	13.5	35,348	0.3	270,571	3,085	-7.8	69,794	2,424	1.6	23,350	3,203	5.3	
2019/04~06	11,613	4.8	28,484	-9.4	273,023	3,121	-8.5	73,967	2,383	2.1	19,304	1,732	2.6	
2019/07~09	11,679	-4.0	31,167	-8.2	272,806	3,445	1.0	70,872	2,279	-5.2	20,676	2,256	2.3	
2019/09	4,531	1.0	11,409	-5.6	89,756	1,238	9.7	23,739	793	-0.6	7,618	803	1.8	
2019/10	4,196	-3.5	10,303	-3.2	99,406	1,130	-0.3	23,507	761	-10.6	7,362	769	2.8	
2019/11	3,884	-0.2	10,427	-8.0	100,738	1,069	-4.7	24,045	767	-9.4	7,009	734	-7.8	
2019/01~2019/11	46,055	3.7	115,729	-5.6	1,016,544	11,850	-4.6	262,185	8,614	-2.3	77,701	8,694	2.5	
2019/04~2019/11	31,372	-0.4	80,381	-8.0	745,973	8,765	-3.4	192,391	6,190	-3.8	54,351	5,491	1.0	

	Industrial for measuring equipment instruments												
	Detector, transducer and transmitters			Receiving instruments			Analyzer for processing			Monitoring and control systems for processing			
	Quantity(n)	VALUE	%	Quantity(n)	VALUE	%	Quantity(n)	VALUE	%	Quantity(n)	VALUE	%	
2018CY	134,896	15,967	10.2	9,779	0.6	793,590	17,245	5.4	22,969	12,824	-6.3	22,423	40.8
2018FY	137,242	16,127	9.4	9,685	0.3	742,946	16,424	-1.3	22,738	12,746	-4.6	23,434	50.1
2018/10~12	37,256	4,477	20.1	2,623	-1.5	179,165	4,204	-4.2	6,099	3,302	-1.8	4,359	9.2
2019/01~03	33,145	3,882	4.3	2,869	-3.2	156,716	3,557	-18.8	5,958	3,727	-2.0	6,257	19.3
2019/04~06	33,646	3,573	-5.8	1,630	-17.1	162,043	3,942	-14.0	4,424	2,682	-4.4	4,365	-20.9
2019/07~09	33,643	3,630	-8.7	2,159	-3.0	163,419	3,869	-5.2	4,525	3,032	4.1	5,072	-30.5
2019/09	10,987	1,183	-12.8	822	8.0	55,361	1,336	-2.1	1,370	1,145	15.8	2,167	-26.4
2019/10	10,009	1,155	-29.0	733	-5.3	70,701	1,354	-8.9	1,514	908	-14.0	1,679	50.3
2019/11	9,908	1,070	-30.0	792	0.3	61,664	1,226	-10.4	1,341	1,047	1.6	2,018	11.3
2019/01~2019/11	120,351	13,310	-9.1	8,183	-6.2	614,543	13,948	-12.3	17,762	11,396	-1.8	19,391	-7.6
2019/04~2019/11	87,206	9,428	-13.7	5,314	-7.7	457,827	10,391	-9.8	11,804	7,669	-1.7	13,134	-16.6

	Industrial for measuring equipment instruments												
	Monitoring and control systems for processing			Miscellaneous industrial measuring equipment instrument for process automation			Radiation instruments			Monitoring instruments for environmental quality			
	Quantity(n)	VALUE	%	Quantity(n)	VALUE	%	Quantity(n)	VALUE	%	Quantity(n)	VALUE	%	
2018CY	3,387	16,626	69.8	5,797	-5.5	22,874	6.6	345,408	6,214	9.7	39,075	20,264	10.4
2018FY	3,292	18,048	90.5	5,386	-12.2	22,871	5.5	392,685	5,518	-9.9	38,615	20,070	6.7
2018/10~12	746	3,067	18.1	1,292	-7.5	5,749	7.4	53,027	964	-16.2	9,810	5,140	-0.8
2019/01~03	986	4,853	41.4	1,404	-22.6	6,344	0.0	102,785	2,353	-22.8	10,178	5,157	-3.6
2019/04~06	816	3,331	-22.8	1,034	-14.2	5,056	-5.6	125,250	434	-38.5	7,988	4,384	-4.1
2019/07~09	1,011	3,743	-35.6	1,329	-10.5	5,425	0.0	128,765	1,339	-10.4	8,945	4,959	-4.7
2019/09	425	1,468	-32.6	699	-8.6	1,922	-1.9	27,973	835	28.9	2,964	1,793	-3.0
2019/10	359	1,293	88.5	386	-10.4	1,814	-2.2	24,871	256	-10.5	3,013	1,537	-15.7
2019/11	369	1,724	17.4	294	-14.8	1,704	-16.3	55,425	244	-14.1	2,806	1,558	-12.6
2019/01~2019/11	3,541	14,944	-4.9	4,447	-15.8	20,343	-3.2	437,096	4,626	-20.5	32,930	17,595	-6.1
2019/04~2019/11	2,555	10,091	-17.8	3,043	-12.2	13,999	-4.6	334,311	2,273	-18.0	22,752	12,438	-7.0

# CURRENT PRODUCTION STATISTICS data: Electric Measuring Instruments



Sources: CURRENT PRODUCTION STATISTICS (Japan Ministry of Economy, Trade and Industry) [<https://www.meti.go.jp/statistics/index.html>]