

CURRENT PRODUCTION STATISTICS data

Electric Measuring Instruments

The notation of "%" indicates the rate of change in the same period of the previous year.

VALUE UNIT: Million yen

	TOTAL													
	Electrical Meters						Electric test and measuring equipment							
	VALUE		%		VALUE		%		Quantity(n)		VALUE		%	
2018CY	463,326	8.9	83,549	-19.3	3,188	-28.5	11,803,926	80,361	-18.9	219,821	25.7	668,565	13,254	21.2
2018FY	465,508	10.5	83,103	-12.2	3,162	-23.2	12,228,644	79,941	-11.7	223,225	25.1	648,352	13,146	15.2
2018/07~09	120,203	19.0	20,315	-16.0	805	-22.3	2,802,026	19,510	-15.7	59,255	43.5	156,959	3,248	20.3
2018/10~12	123,427	13.4	22,114	-0.5	888	-31.6	3,353,012	21,226	1.4	62,353	27.7	170,171	3,462	21.0
2019/01~03	117,175	1.9	20,686	-2.1	763	-3.3	3,286,576	19,923	-2.1	53,631	6.8	148,432	3,185	-3.3
2019/04~06	97,647	-6.7	18,430	-7.8	715	1.3	3,020,428	17,715	-8.1	45,915	-4.3	129,827	2,950	-9.3
2019/04	30,076	-2.4	6,195	-3.9	234	0.4	1,038,233	5,961	-4.0	13,350	-4.3	47,550	939	-10.7
2019/05	31,369	-3.2	6,121	-9.3	225	-5.5	1,017,810	5,896	-9.4	14,463	-1.5	44,198	1,003	-7.6
2019/06	36,202	-12.7	6,114	-10.0	256	8.9	964,385	5,858	-10.7	18,102	-6.4	38,079	1,008	-9.6
2019/01~2019/06	214,822	-2.2	39,116	-4.9	1,478	-1.1	6,307,004	37,638	-5.0	99,546	1.4	278,259	6,135	-6.3
2019/04~2019/06	97,647	-6.7	18,430	-7.8	715	1.3	3,020,428	17,715	-8.1	45,915	-4.3	129,827	2,950	-9.3

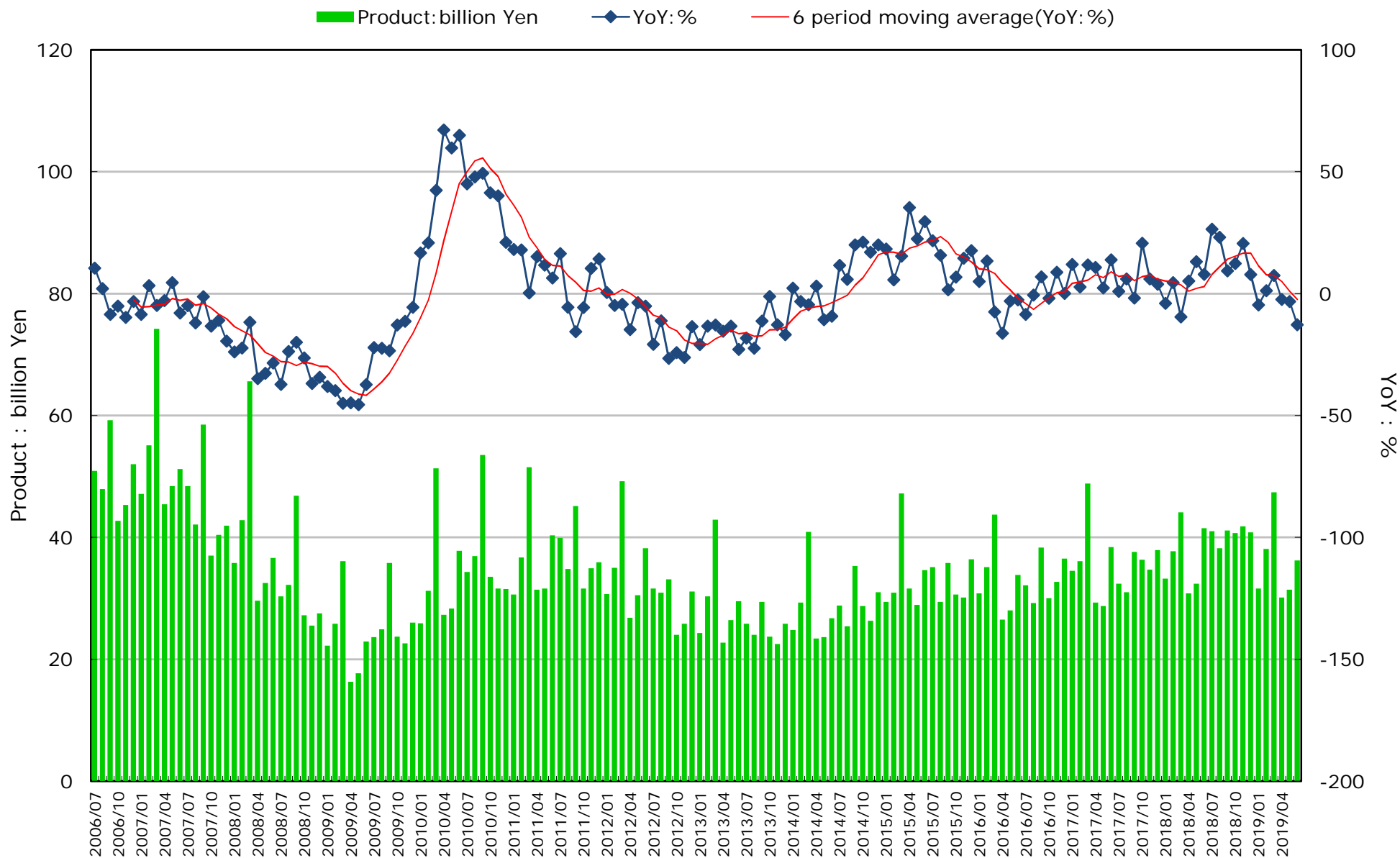
	Electric test and measuring equipment													
	Audio communication measuring instruments			Semiconductor characteristic measuring						IC testing peripheral equipment			Other semiconductor and IC measuring instrument	
	Quantity(n)		VALUE	%	VALUE		%	Quantity(n)		VALUE	%	Quantity(n)		VALUE
2018CY	16,610	13,986	-29.8	143,233	50.8	613	48,558	49.9	905	7,262	2.6	2,106	87,413	57.5
2018FY	17,475	12,460	-33.8	146,528	46.7	700	56,067	61.1	908	7,099	-4.3	2,125	83,362	44.5
2018/07~09	4,182	2,769	-29.1	41,075	80.2	182	13,988	108.7	282	1,740	2.9	642	25,347	76.1
2018/10~12	3,916	3,124	-45.9	42,605	51.9	186	14,450	40.2	208	1,880	-17.1	546	26,275	69.7
2019/01~03	4,721	3,816	-28.6	31,947	11.5	207	17,707	73.6	175	1,477	-9.9	434	12,763	-24.1
2019/04~06	3,910	3,243	17.9	28,109	-9.0	179	16,541	66.7	97	644	-67.8	473	10,924	-42.4
2019/04	1,100	906	35.4	8,002	-11.7	60	5,701	60.5	28	112	-84.6	135	2,189	-54.2
2019/05	1,397	1,096	21.8	8,932	-1.8	60	5,602	117.6	31	261	-56.4	165	3,069	-48.2
2019/06	1,413	1,241	5.0	11,175	-12.3	59	5,238	38.0	38	271	-60.0	173	5,666	-31.5
2019/01~2019/06	8,631	7,059	-12.8	60,056	0.8	386	34,248	70.2	272	2,121	-41.8	907	23,687	-33.8
2019/04~2019/06	3,910	3,243	17.9	28,109	-9.0	179	16,541	66.7	97	644	-67.8	473	10,924	-42.4

	Industrial for measuring equipment instruments												
	miscellaneous test and measuring equipment			Detector, transducer and transmitters									
	Quantity(n)		VALUE	%	Thermometers			Pressure gauge			Flow gauge		
2018CY	49,348	0.4	133,478	8.4	1,238,284	13,419	5.7	279,745	9,650	-0.4	110,382	9,297	1.8
2018FY	51,091	5.7	133,592	8.5	1,199,281	13,158	3.3	280,777	9,689	-0.5	103,205	9,458	5.2
2018/07~09	12,163	2.1	33,937	15.0	303,135	3,412	6.1	66,812	2,403	-1.3	27,786	2,205	14.3
2018/10~12	13,162	8.5	32,856	4.3	306,033	3,251	1.9	69,520	2,529	0.4	22,520	2,362	2.8
2019/01~03	14,683	13.5	35,348	0.3	270,571	3,085	-7.8	69,794	2,424	1.6	23,350	3,203	5.3
2019/04~06	11,613	4.8	28,484	-9.4	273,023	3,121	-8.5	73,967	2,383	2.1	19,304	1,732	2.6
2019/04	3,503	10.5	8,962	2.2	92,501	989	-8.3	24,002	719	4.5	6,202	523	-9.5
2019/05	3,432	-4.9	9,310	0.6	89,468	1,063	-9.4	25,648	766	-2.0	6,806	560	5.1
2019/06	4,678	8.7	10,212	-24.0	91,054	1,069	-7.7	24,317	898	4.1	6,296	649	12.5
2019/01~2019/06	26,296	9.5	63,832	-4.3	543,594	6,206	-8.1	143,761	4,807	1.9	42,654	4,935	4.3
2019/04~2019/06	11,613	4.8	28,484	-9.4	273,023	3,121	-8.5	73,967	2,383	2.1	19,304	1,732	2.6

	Industrial for measuring equipment instruments														
	Detector, transducer and transmitters			Receiving instruments			Analyzer for processing			Monitoring and control systems for processing					
	Quantity(n)		VALUE	%	Quantity(n)		VALUE	%	Quantity(n)		VALUE	%	Quantity(n)		VALUE
2018CY	134,896	15,967	10.2	9,779	0.6	793,590	17,245	5.4	22,969	12,824	-6.3	22,423	40.8		
2018FY	137,242	16,127	9.4	9,685	0.3	742,946	16,424	-1.3	22,738	12,746	-4.6	23,434	50.1		
2018/07~09	33,520	3,974	6.3	2,226	1.6	184,241	4,081	2.9	5,150	2,913	-20.2	7,299	141.8		
2018/10~12	37,256	4,477	20.1	2,623	-1.5	179,165	4,204	-4.2	6,099	3,302	-1.8	4,359	9.2		
2019/01~03	33,145	3,882	4.3	2,869	-3.2	156,716	3,557	-18.8	5,958	3,727	-2.0	6,257	19.3		
2019/04~06	33,646	3,573	-5.8	1,630	-17.1	162,043	3,942	-14.0	4,424	2,682	-4.4	4,365	-20.9		
2019/04	10,391	1,130	-0.2	497	-4.8	57,731	1,253	-16.9	1,681	844	0.7	1,297	95.3		
2019/05	9,836	1,091	-8.6	504	-25.4	48,989	1,233	-18.8	1,509	867	-13.6	1,530	93.7		
2019/06	13,419	1,352	-7.9	629	-18.2	55,323	1,456	-6.4	1,234	971	0.8	1,538	-62.2		
2019/01~2019/06	66,791	7,455	-0.8	4,499	-8.7	318,759	7,499	-16.3	10,382	6,409	-3.0	10,622	-1.3		
2019/04~2019/06	33,646	3,573	-5.8	1,630	-17.1	162,043	3,942	-14.0	4,424	2,682	-4.4	4,365	-20.9		

	Industrial for measuring equipment instruments														
	Monitoring and control systems for processing			Miscellaneous industrial measuring equipment instrument for process automation			Radiation instruments			Monitoring instruments for environmental quality					
	Quantity(n)		VALUE	%	Quantity(n)		VALUE	%	Quantity(n)		VALUE	%	Quantity(n)		VALUE
2018CY	3,387	16,626	69.8	5,797	-5.5	22,874	6.6	345,408	6,214	9.7	39,076	20,264	10.4		
2018FY	3,292	18,048	90.5	5,386	-12.2	22,871	5.5	392,685	5,518	-9.9	38,616	20,070	6.7		
2018/07~09	1,078	5,814	285.5	1,485	-1.7	5,424	0.9	147,132	1,495	-0.2	9,651	5,201	15.6		
2018/10~12	746	3,067	18.1	1,292	-7.5	5,749	7.4	53,027	964	-16.2	9,810	5,140	-0.8		
2019/01~03	986	4,853	41.4	1,404	-22.6	6,344	0.0	102,785	2,353	-22.8	10,178	5,157	-3.6		
2019/04~06	816	3,331	-22.8	1,034	-14.2	5,056	-5.6	125,250	434	-38.5	7,988	4,384	-4.1		
2019/04	138	990	252.3	307	-19.8	1,710	-2.7	12,431	83	-53.1	2,748	1,486	1.2		
2019/05	321	1,195	250.4	335	-25.4	1,696	7.2	21,652	130	-43.7	2,353	1,345	-10.0		
2019/06	357	1,146	-69.0	392	5.1	1,650	-18.1	91,167	221	-25.8	2,887	1,553	-3.5		
2019/01~2019/06	1,802	8,184	5.7	2,438	-19.3	11,400	-2.6	228,035	2,787	-25.8	18,166	9,541	-3.8		
2019/04~2019/06	816	3,331	-22.8	1,034	-14.2	5,056	-5.6	125,250	434	-38.5	7,988	4,384	-4.1		

# CURRENT PRODUCTION STATISTICS data: Electric Measuring Instruments



Sources: CURRENT PRODUCTION STATISTICS (Japan Ministry of Economy, Trade and Industry) [<https://www.meti.go.jp/statistics/index.html>]