

**CURRENT PRODUCTION STATISTICS data**  
**Electric Measuring Instruments**

The notation of "%" indicates the rate of change in the same period of the previous year.

VALUE UNIT: Million yen

	TOTAL													
	Electrical Meters						Electric test and measuring equipment							
	VALUE		%		VALUE		%		Quantity(n)		VALUE		%	
2018CY	463,326	8.9	83,549	-19.3	3,188	-28.5	11,803,926	80,361	-18.9	219,821	25.7	668,565	13,254	21.2
2018FY	465,508	10.5	83,103	-12.2	3,162	-23.2	12,228,644	79,941	-11.7	223,225	25.1	648,352	13,146	15.2
2018/04~06	104,703	8.6	19,988	-26.3	706	-29.1	2,787,030	19,282	-26.2	47,986	25.9	172,790	3,251	27.0
2018/07~09	120,203	19.0	20,315	-16.0	805	-22.3	2,802,026	19,510	-15.7	59,255	43.5	156,959	3,248	20.3
2018/10~12	123,427	13.4	22,114	-0.5	888	-31.6	3,353,012	21,226	1.4	62,353	27.7	170,171	3,462	21.0
2019/01~03	117,175	1.9	20,686	-2.1	763	-3.3	3,286,576	19,923	-2.1	53,631	6.8	148,432	3,185	-3.3
2019/02	38,117	1.2	6,716	-4.6	264	-5.7	1,094,256	6,452	-4.5	17,752	5.8	49,340	1,073	-2.2
2019/03	47,436	7.5	7,149	-1.0	241	-1.6	1,130,390	6,908	-1.0	22,476	20.5	51,531	1,229	3.3
2019/04	30,076	-2.4	6,195	-3.9	234	0.4	1,038,233	5,961	-4.0	13,350	-4.3	47,550	939	-10.7
2019/01~2019/04	147,251	1.0	26,881	-2.5	997	-2.4	4,324,809	25,884	-2.5	66,981	4.4	195,982	4,124	-5.1
2019/04~2019/04	30,076	-2.4	6,195	-3.9	234	0.4	1,038,233	5,961	-4.0	13,350	-4.3	47,550	939	-10.7

	Electric test and measuring equipment																
	Audio communication measuring instruments				Semiconductor characteristic measuring instruments				Other semiconductor and IC measuring instrument								
	Quantity(n)		VALUE		%		Quantity(n)		VALUE		%		Quantity(n)		VALUE		%
2018CY	16,610	13,986	-29.8	143,233	50.8	613	48,558	49.9	905	7,262	2.6	2,106	87,413	57.5			
2018FY	17,475	12,460	-33.8	146,528	46.7	700	56,067	61.1	908	7,099	-4.3	2,125	83,362	44.5			
2018/04~06	4,656	2,751	-27.7	30,901	51.3	125	9,922	30.5	243	2,002	9.9	503	18,977	72.6			
2018/07~09	4,182	2,769	-29.1	41,075	80.2	182	13,988	108.7	282	1,740	2.9	642	25,347	76.1			
2018/10~12	3,916	3,124	-45.9	42,605	51.9	186	14,450	40.2	208	1,880	-17.1	546	26,275	69.7			
2019/01~03	4,721	3,816	-28.6	31,947	11.5	207	17,707	73.6	175	1,477	-9.9	434	12,763	-24.1			
2019/02	1,642	1,328	-36.9	10,069	2.8	76	6,475	102.4	41	325	-47.6	160	3,269	-45.3			
2019/03	1,774	1,596	39.5	13,597	28.9	73	6,268	102.1	95	743	19.3	162	6,586	-3.5			
2019/04	1,100	906	35.4	8,002	-11.7	60	5,701	60.5	28	112	-84.6	135	2,189	-54.2			
2019/01~2019/04	5,821	4,722	-21.4	39,949	5.9	267	23,408	70.2	203	1,589	-32.9	569	14,952	-30.8			
2019/04~2019/04	1,100	906	35.4	8,002	-11.7	60	5,701	60.5	28	112	-84.6	135	2,189	-54.2			

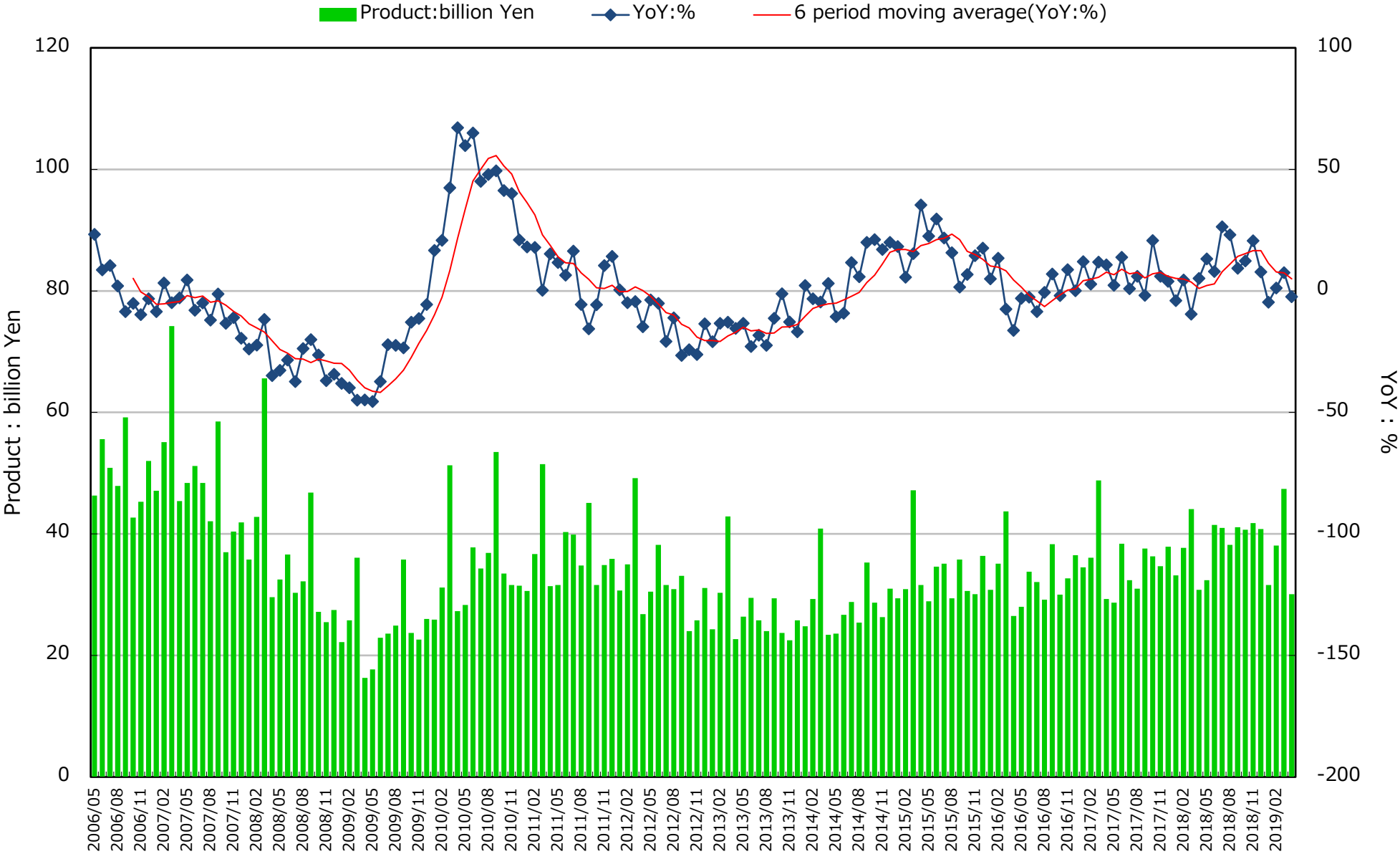
	Industrial for measuring equipment instruments														
	miscellaneous test and measuring equipment				Detector, transducer and transmitters				Flow gauge						
	VALUE		%		Quantity(n)		VALUE		%		Quantity(n)		VALUE		%
2018CY	49,348	0.4	133,478	8.4	1,238,284	13,419	5.7	279,745	9,650	-0.4	110,382	9,297	1.8		
2018FY	51,091	5.7	133,592	8.5	1,199,281	13,158	3.3	280,777	9,689	-0.5	103,205	9,458	5.2		
2018/04~06	11,083	-2.3	31,451	16.9	319,542	3,410	14.1	74,651	2,333	-2.5	29,549	1,688	-2.0		
2018/07~09	12,163	2.1	33,937	15.0	303,135	3,412	6.1	66,812	2,403	-1.3	27,786	2,205	14.3		
2018/10~12	13,162	8.5	32,856	4.3	306,033	3,251	1.9	69,520	2,529	0.4	22,520	2,362	2.8		
2019/01~03	14,683	13.5	35,348	0.3	270,571	3,085	-7.8	69,794	2,424	1.6	23,350	3,203	5.3		
2019/02	5,282	39.5	11,345	-0.9	88,388	1,010	-5.2	23,659	797	5.0	7,922	1,044	3.9		
2019/03	6,054	4.9	14,343	-2.4	90,206	1,102	-10.0	25,909	960	1.5	8,175	1,290	3.0		
2019/04	3,503	10.5	8,962	2.2	92,501	989	-8.3	24,002	719	4.5	6,202	523	-9.5		
2019/01~2019/04	18,186	12.9	44,310	0.7	363,072	4,074	-7.9	93,796	3,143	2.3	29,552	3,726	2.9		
2019/04~2019/04	3,503	10.5	8,962	2.2	92,501	989	-8.3	24,002	719	4.5	6,202	523	-9.5		

	Industrial for measuring equipment instruments																
	Detector, transducer and transmitters				Receiving instruments				Analyzer for processing				Monitoring and control systems for processing				
	Quantity(n)		VALUE		%		Quantity(n)		VALUE		%		Quantity(n)		VALUE		%
2018CY	134,896	15,967	10.2	9,779	0.6	793,590	17,245	5.4	22,969	12,824	-6.3	22,423	40.8				
2018FY	137,242	16,127	9.4	9,685	0.3	742,946	16,424	-1.3	22,738	12,746	-4.6	23,434	50.1				
2018/04~06	33,321	3,794	6.7	1,967	7.0	222,824	4,582	17.4	5,531	2,804	10.2	5,519	64.7				
2018/07~09	33,520	3,974	6.3	2,226	1.6	184,241	4,081	2.9	5,150	2,913	-20.2	7,299	141.8				
2018/10~12	37,256	4,477	20.1	2,623	-1.5	179,165	4,204	-4.2	6,099	3,302	-1.8	4,359	9.2				
2019/01~03	33,145	3,882	4.3	2,869	-3.2	156,716	3,557	-18.8	5,958	3,727	-2.0	6,257	19.3				
2019/02	10,401	1,185	-1.7	918	4.1	53,793	1,144	-20.5	1,889	1,172	0.1	2,058	23.5				
2019/03	13,077	1,496	4.5	1,277	-5.4	54,529	1,277	-17.5	2,265	1,457	-10.0	2,739	1.5				
2019/04	10,391	1,130	-0.2	497	-4.8	57,731	1,253	-16.9	1,681	844	0.7	1,297	95.3				
2019/01~2019/04	43,536	5,012	3.3	3,366	-3.4	214,447	4,810	-18.3	7,639	4,571	-1.6	7,554	27.8				
2019/04~2019/04	10,391	1,130	-0.2	497	-4.8	57,731	1,253	-16.9	1,681	844	0.7	1,297	95.3				

	Industrial for measuring equipment instruments																
	Monitoring and control systems for processing				Miscellaneous industrial measuring equipment instrument for process automation				Radiation instruments				Monitoring instruments for environmental quality				
	Quantity(n)		VALUE		%		Quantity(n)		VALUE		%		Quantity(n)		VALUE		%
2018CY	3,387	16,626	69.8	5,797	-5.5	22,874	6.6	345,408	6,214	9.7	39,076	20,264	10.4				
2018FY	3,292	18,048	90.5	5,386	-12.2	22,871	5.5	392,685	5,518	-9.9	38,616	20,070	6.7				
2018/04~06	482	4,314	122.4	1,205	-14.5	5,354	16.3	89,741	706	65.3	8,977	4,572	20.7				
2018/07~09	1,078	5,814	285.5	1,485	-1.7	5,424	0.9	147,132	1,495	-0.2	9,651	5,201	15.6				
2018/10~12	746	3,067	18.1	1,292	-7.5	5,749	7.4	53,027	964	-16.2	9,810	5,140	-0.8				
2019/01~03	986	4,853	41.4	1,404	-22.6	6,344	0.0	102,785	2,353	-22.8	10,178	5,157	-3.6				
2019/02	325	1,561	81.1	497	-38.3	2,017	-10.4	38,181	555	-21.5	3,429	1,749	2.5				
2019/03	455	2,346	7.7	393	-24.3	2,745	4.5	62,014	1,501	0.5	3,783	1,967	-5.1				
2019/04	138	990	252.3	307	-19.8	1,710	-2.7	12,431	83	-53.1	2,748	1,486	1.2				
2019/01~2019/04	1,124	5,843	57.4	1,711	-22.2	8,054	-0.6	115,216	2,436	-24.5	12,926	6,643	-2.6				
2019/04~2019/04	138	990	252.3	307	-19.8	1,710	-2.7	12,431	83	-53.1	2,748	1,486	1.2				

Sources: CURRENT PRODUCTION STATISTICS (Japan Ministry of Economy, Trade and Industry) (https://www.meti.go.jp/statistics/index.html)

# CURRENT PRODUCTION STATISTICS data:Electric Measuring Instruments



Sources: CURRENT PRODUCTION STATISTICS (Japan Ministry of Economy, Trade and Industry) [<https://www.meti.go.jp/statistics/index.html>]