

CURRENT PRODUCTION STATISTICS data

Electric Measuring Instruments

The notation of "%" indicates the rate of change in the same period of the previous year.

VALUE UNIT: Million yen

	TOTAL													
	Electrical Meters						Electric test and measuring equipment							
	VALUE		%		VALUE		%		VALUE		%			
	Quantity(n)	VALUE	%	Quantity(n)	VALUE	%	Quantity(n)	VALUE	%	Quantity(n)	VALUE	%		
2017CY	463,326	8.9	83,549	-19.3	3,188	-28.5	11,803,926	80,361	-18.9	219,821	25.7	668,565	13,254	21.2
2017FY	421,226	3.6	94,670	-20.4	4,119	-5.8	12,827,216	90,551	-21.0	178,470	23.9	575,791	11,413	-1.9
2018/01~03	114,993	-3.7	21,132	-29.5	789	-29.9	2,861,858	20,343	-29.5	50,227	7.6	168,645	3,293	16.9
2018/04~06	104,703	8.6	19,988	-26.3	706	-29.1	2,787,030	19,282	-26.2	47,986	25.9	172,790	3,251	27.0
2018/07~09	120,203	19.0	20,315	-16.0	805	-22.3	2,802,026	19,510	-15.7	59,255	43.5	156,959	3,248	20.3
2018/10~12	123,427	13.4	22,114	-0.5	888	-31.6	3,353,012	21,226	1.4	62,353	27.7	170,171	3,462	21.0
2018/12	40,848	7.8	7,072	-3.5	291	-32.2	1,103,694	6,781	-1.7	20,970	20.6	47,740	1,073	16.5
2019/01	31,622	-4.7	6,821	-0.7	258	-2.3	1,061,930	6,563	-0.7	13,403	-9.4	47,561	883	-12.2
2019/02	38,117	1.2	6,716	-4.6	264	-5.7	1,094,256	6,452	-4.5	17,752	5.8	49,340	1,073	-2.2
2019/01~2019/02	69,739	-1.6	13,537	-2.7	522	-4.0	2,156,186	13,015	-2.6	31,155	-1.3	96,901	1,956	-7.0
2018/04~2019/02	418,072	10.9	75,954	-13.1	2,921	-24.6	11,098,254	73,033	-12.6	200,749	25.6	596,821	11,917	16.6

	Electric test and measuring equipment													
	Audio communication measuring instruments			Semiconductor characteristic measuring						IC testing peripheral equipment			Other semiconductor and IC measuring instrument	
	Quantity(n)	VALUE	%	VALUE	%	Quantity(n)	VALUE	%	Quantity(n)	VALUE	%	Quantity(n)	VALUE	%
2017CY	16,610	13,986	-29.8	143,233	50.8	613	48,558	49.9	905	7,262	2.6	2,106	87,413	57.5
2017FY	12,014	18,826	-10.2	99,910	51.2	471	34,808	43.0	782	7,420	58.2	1,673	57,682	55.6
2018/01~03	3,856	5,342	-17.0	28,652	20.9	120	10,198	31.1	172	1,640	26.3	415	16,814	15.0
2018/04~06	4,656	2,751	-27.7	30,901	51.3	125	9,922	30.5	243	2,002	9.9	503	18,977	72.6
2018/07~09	4,182	2,769	-29.1	41,075	80.2	182	13,988	108.7	282	1,740	2.9	642	25,347	76.1
2018/10~12	3,916	3,124	-45.9	42,605	51.9	186	14,450	40.2	208	1,880	-17.1	546	26,275	69.7
2018/12	1,300	1,123	-65.2	13,854	64.0	69	5,439	94.9	58	741	69.2	169	7,674	47.1
2019/01	1,305	892	-57.4	8,281	-0.3	58	4,964	27.4	39	409	3.0	112	2,908	-27.5
2019/02	1,642	1,328	-36.9	10,069	2.8	76	6,475	102.4	41	325	-47.6	160	3,269	-45.3
2019/01~2019/02	2,947	2,220	-47.1	18,350	1.4	134	11,439	61.2	80	734	-27.8	272	6,177	-38.2
2018/04~2019/02	15,701	10,864	-38.6	132,931	48.8	627	49,799	57.1	813	6,356	-6.5	1,963	76,776	51.0

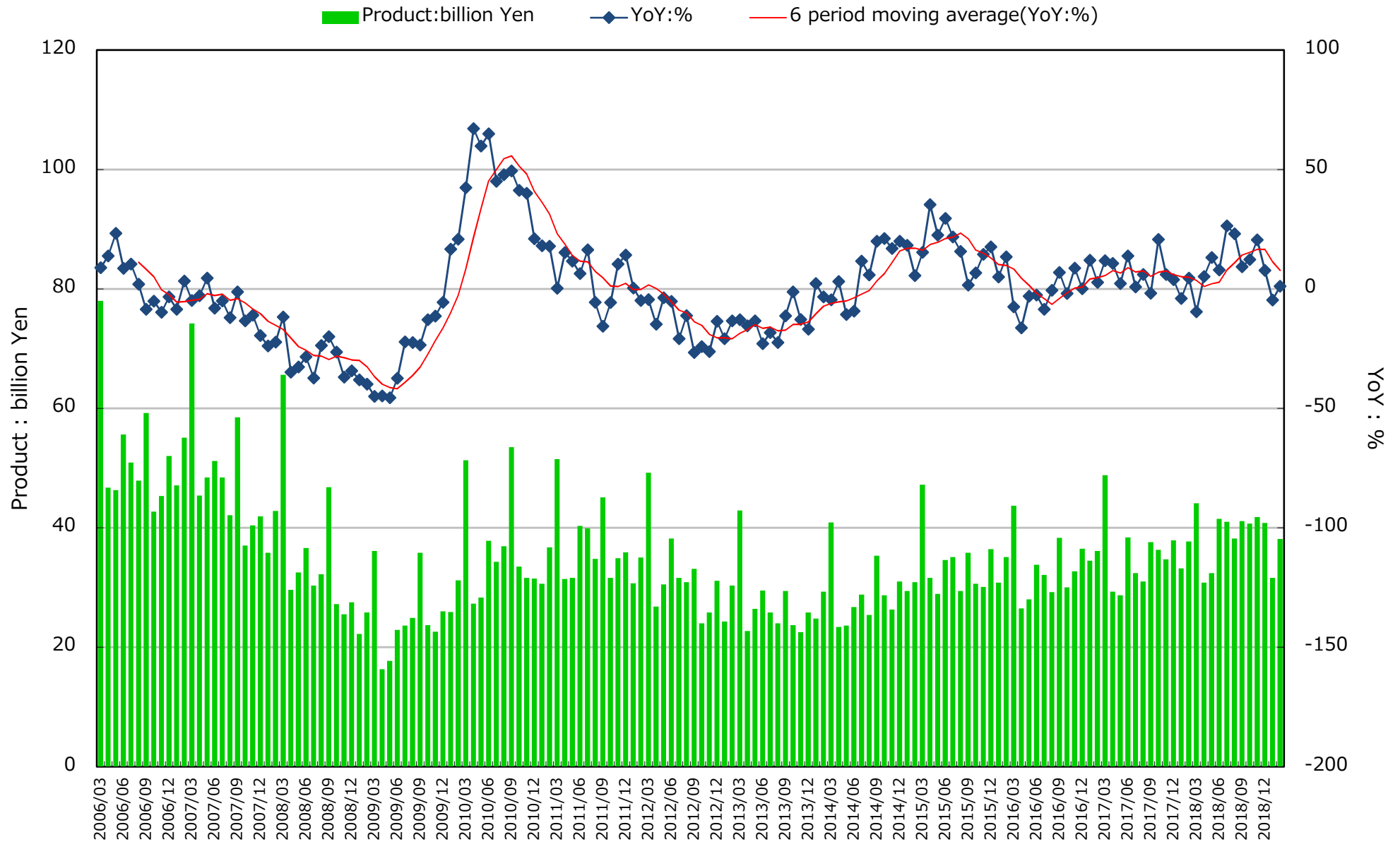
	Industrial for measuring equipment instruments												
	miscellaneous test and measuring equipment			Detector, transducer and transmitters									
	VALUE	%	VALUE	%	Quantity(n)	VALUE	%	Quantity(n)	VALUE	%	Quantity(n)	VALUE	%
2017CY	49,348	0.4	133,478	8.4	1,238,284	13,419	5.7	279,745	9,650	-0.4	110,382	9,297	1.8
2017FY	48,321	6.4	123,147	3.3	1,251,391	12,739	0.9	312,708	9,733	4.9	106,110	8,990	-5.0
2017/01~03	12,940	-5.9	35,234	0.0	309,574	3,346	1.2	68,762	2,385	1.8	30,527	3,042	-4.5
2017/04~06	11,083	-2.3	31,451	16.9	319,542	3,410	14.1	74,651	2,333	-2.5	29,549	1,688	-2.0
2017/07~09	12,163	2.1	33,937	15.0	303,135	3,412	6.1	66,812	2,403	-1.3	27,786	2,205	14.3
2017/10~12	13,162	8.5	32,856	4.3	306,033	3,251	1.9	69,520	2,529	0.4	22,520	2,362	2.8
2018/12	4,920	2.6	10,877	0.8	100,312	996	-4.8	22,010	831	-6.5	6,775	818	3.2
2019/01	3,347	-1.1	9,660	6.3	91,977	973	-7.9	20,226	667	-1.9	7,253	869	10.8
2019/02	5,282	39.5	11,345	-0.9	88,388	1,010	-5.2	23,659	797	5.0	7,922	1,044	3.9
2019/01~2019/02	8,629	20.3	21,005	2.3	180,365	1,983	-6.5	43,885	1,464	1.7	15,175	1,913	6.9
2018/04~2019/02	45,037	5.8	119,249	10.0	1,109,075	12,056	4.7	254,868	8,729	-0.7	95,030	8,168	5.6

	Industrial for measuring equipment instruments												
	Detector, transducer and transmitters			Receiving instruments			Analyzer for processing			Monitoring and control systems for processing			
	Quantity(n)	VALUE	%	Quantity(n)	VALUE	%	Quantity(n)	VALUE	%	Quantity(n)	VALUE	%	
2017CY	134,896	15,967	10.2	9,779	0.6	793,590	17,245	5.4	22,969	12,824	-6.3	22,423	40.8
2017FY	130,536	14,746	7.8	9,653	6.4	793,663	16,637	3.3	23,883	13,364	0.1	15,608	-7.7
2018/01~03	30,799	3,722	7.6	2,963	-2.1	207,360	4,378	6.9	6,189	3,805	-7.8	5,246	-5.7
2018/04~06	33,321	3,794	6.7	1,967	7.0	222,824	4,582	17.4	5,531	2,804	10.2	5,519	64.7
2018/07~09	33,520	3,974	6.3	2,226	1.6	184,241	4,081	2.9	5,150	2,913	-20.2	7,299	141.8
2018/10~12	37,256	4,477	20.1	2,623	-1.5	179,165	4,204	-4.2	6,099	3,302	-1.8	4,359	9.2
2018/12	10,766	1,323	6.4	1,059	12.8	58,527	1,348	-13.0	1,854	1,215	-0.2	1,429	12.2
2019/01	9,667	1,201	10.7	674	-7.8	48,394	1,136	-18.3	1,804	1,098	8.2	1,460	65.7
2019/02	10,401	1,185	-1.7	918	4.1	53,793	1,144	-20.5	1,889	1,172	0.1	2,058	23.5
2019/01~2019/02	20,068	2,386	4.1	1,592	-1.3	102,187	2,280	-19.4	3,693	2,270	3.8	3,518	38.1
2018/04~2019/02	124,165	14,631	9.9	8,408	1.3	688,417	15,147	0.4	20,473	11,289	-3.9	20,695	60.3

	Industrial for measuring equipment instruments						Radiation instruments			Monitoring instruments for environmental quality			
	Monitoring and control systems for processing			Miscellaneous industrial measuring equipment instrument for process automation									
	Quantity(n)	VALUE	%	Quantity(n)	VALUE	%	Quantity(n)	VALUE	%	Quantity(n)	VALUE	%	
2017CY	3,387	16,626	69.8	5,797	-5.5	22,874	6.6	345,408	6,214	9.7	39,076	20,264	10.4
2017FY	2,751	9,475	-12.4	6,133	0.7	21,677	13.3	303,634	6,124	-14.6	44,085	18,815	10.1
2018/01~03	1,081	3,431	-8.5	1,815	0.1	6,347	3.5	55,508	3,049	17.7	10,638	5,351	9.3
2018/04~06	482	4,314	122.4	1,205	-14.5	5,354	16.3	89,741	706	65.3	8,977	4,572	20.7
2018/07~09	1,078	5,814	285.5	1,485	-1.7	5,424	0.9	147,132	1,495	-0.2	9,651	5,201	15.6
2018/10~12	746	3,067	18.1	1,292	-7.5	5,749	7.4	53,027	964	-16.2	9,810	5,140	-0.8
2018/12	203	913	3.3	516	32.3	1,858	1.1	9,037	394	-34.6	3,056	1,535	-14.6
2019/01	206	946	142.6	514	4.7	1,582	7.8	2,590	297	-65.0	2,966	1,441	-8.3
2019/02	325	1,561	81.1	497	-38.3	2,017	-10.4	38,181	555	-21.5	3,429	1,749	2.5
2019/01~2019/02	531	2,507	100.2	1,011	-22.0	3,599	-3.2	40,771	852	-45.2	6,395	3,190	-2.7
2018/04~2019/02	2,837	15,702	115.2	4,993	-11.1	20,126	5.7	330,671	4,017	-13.2	34,833	18,103	8.1

Sources: CURRENT PRODUCTION STATISTICS (Japan Ministry of Economy, Trade and Industry) (<https://www.meti.go.jp/statistics/index.html>)

CURRENT PRODUCTION STATISTICS data:Electric Measuring Instruments



Sources: CURRENT PRODUCTION STATISTICS (Japan Ministry of Economy, Trade and Industry) [<http://www.meti.go.jp/statistics/index.html>]