

CURRENT PRODUCTION STATISTICS data
Electric Measuring Instruments

The notation of "%" indicates the rate of change in the same period of the previous year.

VALUE UNIT:Million yen

	TOTAL													
	Electrical Meters						Electric test and measuring equipment							
	VALUE		%		Quantity(n)		VALUE		%		Quantity(n)			
2017CY	422,949	10.2	99,787	-4.0	4,456	2.7	13,576,189	95,331	-4.3	175,620	28.9	543,204	12,101	-1.8
2016FY	393,070	-1.0	104,636	14.4	4,371	-3.3	14,129,468	100,265	15.3	144,526	-6.9	520,054	11,928	-8.2
2017/01~03	115,905	8.7	26,249	2.7	1,126	3.1	3,610,831	25,123	2.7	46,930	21.6	128,188	3,110	-11.1
2017/04~06	96,952	13.3	27,134	8.7	996	0.4	3,706,877	26,138	9.0	38,421	29.0	133,652	2,853	-7.7
2017/07~09	101,429	5.5	24,173	-10.0	1,036	1.9	3,265,646	23,137	-10.5	41,795	23.2	125,594	2,995	3.8
2017/10~12	108,663	13.8	22,231	-16.3	1,298	5.0	2,992,835	20,933	-17.3	48,474	43.0	155,770	3,143	10.6
2017/12	37,908	7.4	7,328	-16.0	429	10.9	971,424	6,899	-17.2	17,393	28.4	44,517	1,014	8.1
2018/01	33,155	-1.7	7,002	-18.1	394	2.3	935,366	6,608	-19.0	14,658	4.2	41,246	841	-10.6
2018/02	37,672	8.1	7,151	-15.0	401	5.0	939,973	6,750	-15.9	16,678	27.1	50,192	938	-5.3
2018/01~2018/02	70,827	3.3	14,153	-16.5	795	3.7	1,875,339	13,358	-17.5	31,336	15.3	91,438	1,779	-7.9
2017/04~2018/02	377,871	9.3	87,691	-8.0	4,125	2.8	11,840,697	83,566	-8.5	160,026	28.2	506,454	10,770	0.2

	Electric test and measuring equipment														
	Audio communication measuring instruments			Semiconductor characteristic measuring			Logic IC testers			IC testing peripheral equipment			Other semiconductor and IC measuring instrument		
	Quantity(n)	VALUE	%	VALUE	%	Quantity(n)	VALUE	%	Quantity(n)	VALUE	%	Quantity(n)	VALUE	%	
2017CY	11,764	19,862	-6.3	95,094	61.9	480	32,389	52.9	815	7,078	66.1	1,622	55,627	67.1	
2016FY	12,249	21,158	-14.1	66,097	-5.2	417	24,340	8.3	667	4,689	5.1	1,139	37,068	-13.4	
2017/01~03	3,985	6,429	-0.7	23,699	45.1	129	7,779	68.3	205	1,298	49.2	365	14,622	34.9	
2017/04~06	2,472	3,806	-26.5	20,418	91.4	115	7,602	51.6	262	1,822	48.9	406	10,994	148.0	
2017/07~09	2,439	3,906	-13.0	22,925	39.6	105	6,704	43.5	126	1,691	36.9	387	14,530	38.2	
2017/10~12	2,868	5,721	13.1	28,052	83.3	131	10,304	49.8	222	2,267	143.2	464	15,481	106.4	
2017/12	838	3,206	40.3	8,446	43.5	33	2,791	2.4	60	438	59.9	145	5,217	80.7	
2018/01	967	2,095	-36.1	8,339	27.9	44	3,930	126.8	36	397	20.3	98	4,012	-10.0	
2018/02	1,197	2,103	43.6	9,850	51.5	38	3,199	17.3	69	620	19.0	143	6,031	85.4	
2018/01~2018/02	2,164	4,198	-11.5	18,189	39.7	82	7,129	59.8	105	1,017	19.5	241	10,043	30.3	
2017/04~2018/02	9,943	17,631	-9.5	89,584	61.6	433	31,739	51.0	715	6,797	60.2	1,498	51,048	69.3	

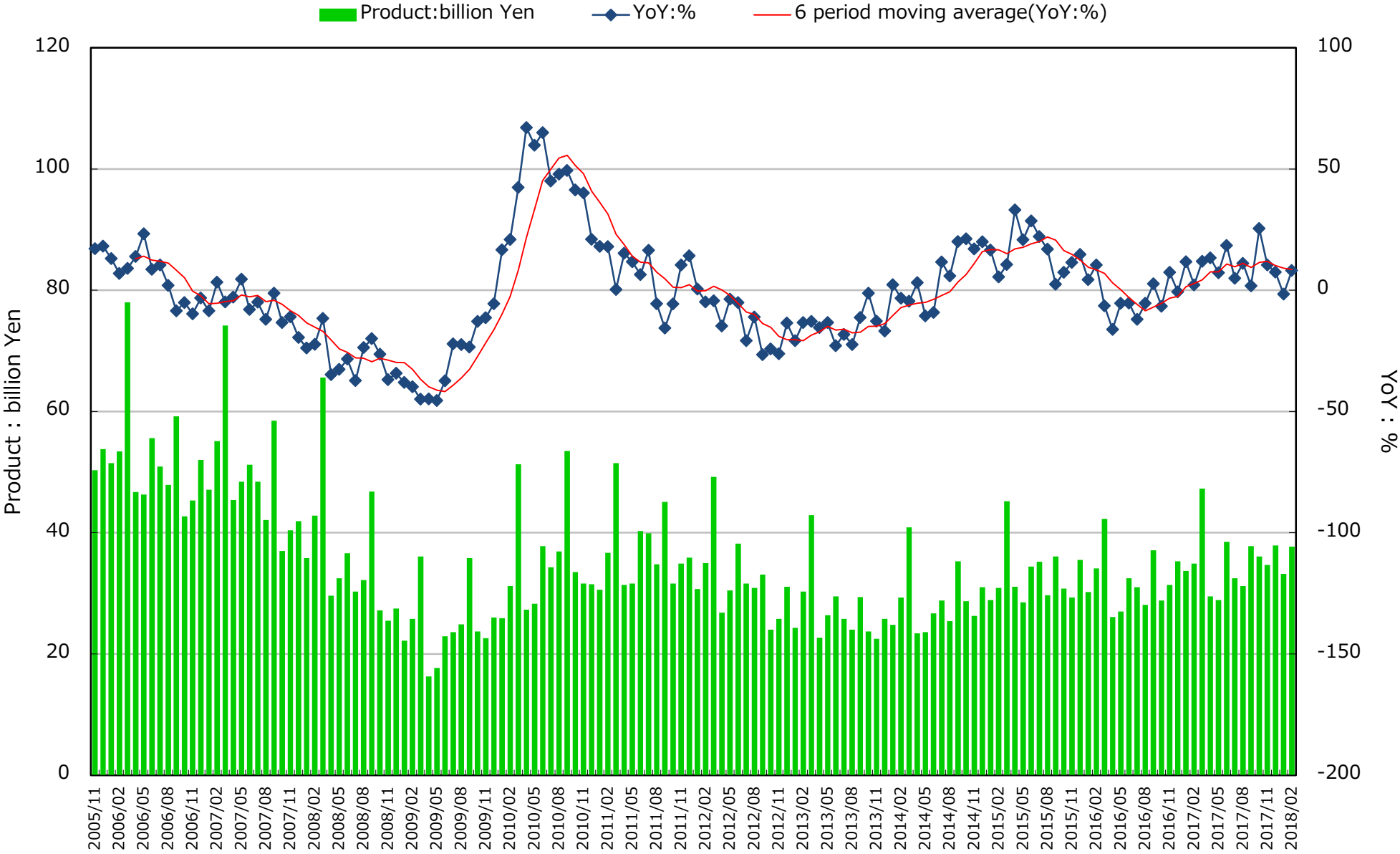
	Industrial for measuring equipment instruments												
	miscellaneous test and measuring equipment			Detector, transducer and transmitters			Pressure gauge			Flow gauge			
	Quantity(n)	VALUE	%	Quantity(n)	VALUE	%	Quantity(n)	VALUE	%	Quantity(n)	VALUE	%	
2017CY	48,563	10.5	123,515	4.1	1,281,241	13,027	8.9	312,674	9,691	-1.2	102,699	9,135	-3.1
2016FY	45,343	-5.2	119,184	-5.6	1,059,065	12,202	-2.3	284,947	9,276	-15.1	95,792	9,463	2.9
2017/01~03	13,692	11.3	35,238	1.4	303,076	3,299	7.8	68,728	2,343	-18.5	27,116	3,187	1.2
2017/04~06	11,344	4.5	27,183	5.3	305,216	3,241	8.6	79,791	2,394	7.3	24,583	1,722	11.7
2017/07~09	11,969	18.3	29,465	0.9	323,858	3,163	0.6	80,237	2,435	-0.1	24,186	1,929	-15.1
2017/10~12	11,558	8.2	31,629	9.3	349,091	3,324	19.8	83,918	2,519	11.3	26,814	2,297	-6.8
2017/12	4,727	6.7	10,787	0.9	107,667	1,046	19.3	28,226	889	18.7	9,225	793	-15.3
2018/01	3,383	1.9	9,075	0.1	109,662	1,041	8.4	20,741	680	4.1	9,100	784	-8.0
2018/02	3,787	-9.1	11,429	3.4	106,240	1,048	3.8	22,633	759	5.3	10,177	1,005	-2.7
2018/01~2018/02	7,170	-4.2	20,504	1.9	215,902	2,089	6.0	43,374	1,439	4.7	19,277	1,789	-5.1
2017/04~2018/02	42,041	7.4	108,781	4.5	1,194,067	11,817	8.7	287,320	8,787	5.8	94,860	7,737	-5.2

	Industrial for measuring equipment instruments												
	Detector, transducer and transmitters			Receiving instruments			Analyzer for processing			Monitoring and control systems for processing			
	Quantity(n)	VALUE	%	Quantity(n)	VALUE	%	Quantity(n)	VALUE	%	Quantity(n)	VALUE	%	
2017CY	131,481	14,484	5.7	9,718	7.9	794,210	16,440	2.8	24,495	13,687	1.7	15,925	-6.2
2016FY	128,191	13,677	0.8	9,075	-8.2	774,256	16,100	7.0	22,838	13,352	-2.1	16,908	-22.5
2017/01~03	31,744	3,460	-0.8	3,028	2.4	199,956	4,096	2.7	6,801	4,128	-2.6	5,563	-1.1
2017/04~06	32,119	3,556	0.9	1,838	19.2	197,632	3,989	4.6	5,581	2,545	3.5	3,350	-9.8
2017/07~09	33,817	3,739	15.5	2,190	4.0	182,760	3,965	-4.3	5,707	3,652	16.6	3,019	-24.7
2017/10~12	33,801	3,729	7.9	2,662	11.0	213,862	4,390	8.5	6,406	3,362	-7.5	3,993	10.2
2017/12	11,743	1,243	8.8	939	2.4	76,095	1,549	15.0	2,221	1,217	-7.2	1,274	-23.0
2018/01	9,348	1,085	10.9	731	-5.3	65,460	1,391	8.7	1,737	1,015	-13.8	881	-6.2
2018/02	9,897	1,206	15.1	882	1.6	63,776	1,439	6.1	2,185	1,171	-6.2	1,667	-6.1
2018/01~2018/02	19,245	2,291	13.1	1,613	-1.6	129,236	2,830	7.4	3,922	2,186	-9.9	2,548	-6.2
2017/04~2018/02	118,982	13,315	8.8	8,303	8.0	723,490	15,174	3.6	21,616	11,745	0.8	12,910	-8.2

	Industrial for measuring equipment instruments												
	Monitoring and control systems for processing			Miscellaneous industrial measuring equipment instrument for process automation			Radiation instruments			Monitoring instruments for environmental quality			
	Quantity(n)	VALUE	%	Quantity(n)	VALUE	%	Quantity(n)	VALUE	%	Quantity(n)	VALUE	%	
2017CY	4,153	9,793	-10.9	6,132	2.4	21,141	15.1	362,226	5,666	-32.8	45,956	18,361	11.3
2016FY	5,787	10,816	-28.7	6,092	-8.6	19,131	-5.1	392,847	7,640	-14.8	43,574	17,084	11.0
2017/01~03	2,483	3,749	-4.3	1,814	6.2	6,134	14.2	114,100	2,591	-23.5	12,509	4,897	13.6
2017/04~06	524	1,940	-19.2	1,410	7.3	4,548	13.8	23,881	427	-63.9	10,301	3,787	-0.3
2017/07~09	474	1,508	-41.0	1,511	4.1	5,373	13.6	89,235	1,498	-30.4	11,432	4,498	12.4
2017/10~12	672	2,596	23.1	1,397	-7.7	5,086	19.1	135,010	1,150	-32.9	11,714	5,179	18.0
2017/12	323	884	-22.4	390	-24.3	1,837	4.7	53,476	602	-5.5	4,126	1,798	5.6
2018/01	227	390	-20.1	491	8.9	1,467	0.8	12,597	848	22.2	2,922	1,572	16.8
2018/02	361	862	-30.3	805	49.4	2,252	13.2	5,049	707	20.9	3,462	1,707	1.5
2018/01~2018/02	588	1,252	-27.4	1,296	30.9	3,719	7.9	17,646	1,555	21.6	6,384	3,279	8.3
2017/04~2018/02	2,258	7,296	-17.0	5,614	6.6	18,726	13.9	265,772	4,630	-26.8	39,831	16,743	10.0

Sources: CURRENT PRODUCTION STATISTICS (Japan Ministry of Economy, Trade and Industry) (<http://www.meti.go.jp/statistics/index.html>)

CURRENT PRODUCTION STATISTICS data:Electric Measuring Instruments



Sources: CURRENT PRODUCTION STATISTICS (Japan Ministry of Economy, Trade and Industry) [<http://www.meti.go.jp/statistics/index.html>]