

CURRENT PRODUCTION STATISTICS data
Electric Measuring Instruments

The notation of "%" indicates the rate of change in the same period of the previous year.

VALUE UNIT: Million yen

	TOTAL													
	Electrical Meters						Electric test and measuring equipment							
	VALUE		%		VALUE		%		Quantity(n)		VALUE		%	
2018CY	463,239	8.8	83,480	-19.4	3,512	-21.2	11,649,983	79,968	-19.3	220,141	25.8	649,163	12,830	16.3
2017FY	421,602	3.7	95,006	-20.2	4,463	2.1	12,827,806	90,543	-21.0	178,627	24.0	558,028	10,988	-6.3
2018/01~03	115,369	-3.4	21,468	-28.4	1,133	0.6	2,862,448	20,335	-29.5	50,384	7.9	150,882	2,868	-1.6
2018/04~06	104,745	8.7	19,988	-26.3	706	-29.1	2,787,030	19,282	-26.2	48,120	26.2	171,151	3,252	27.1
2018/07~09	120,010	18.8	20,185	-16.5	805	-22.3	2,752,632	19,380	-16.2	59,284	43.5	156,959	3,248	20.3
2018/10~12	123,115	13.1	21,839	-1.8	868	-33.1	3,247,873	20,971	0.2	62,353	27.7	170,171	3,462	21.0
2018/11	41,716	20.2	7,500	5.1	307	-29.9	1,162,682	7,193	7.3	20,853	36.8	57,870	1,151	25.0
2018/12	40,774	7.6	6,999	-4.5	291	-32.2	1,070,336	6,708	-2.8	20,970	20.6	47,740	1,073	16.5
2019/01	31,563	-4.8	6,763	-3.4	258	-34.5	1,033,089	6,505	-1.6	13,403	-8.6	47,561	883	5.0
2019/01~2019/01	31,563	-4.8	6,763	-3.4	258	-34.5	1,033,089	6,505	-1.6	13,403	-8.6	47,561	883	5.0
2018/04~2019/01	379,433	11.8	68,775	-14.6	2,637	-29.2	9,820,624	66,138	-13.9	183,160	28.2	545,842	10,845	21.0

	Electric test and measuring equipment													
	Audio communication measuring instruments			Semiconductor characteristic measuring						IC testing peripheral equipment			Other semiconductor and IC measuring instrument	
	Quantity(n)		VALUE	VALUE		Quantity(n)		VALUE		Quantity(n)		VALUE		Quantity(n)
2018CY	16,677	13,988	-29.8	143,983	51.4	613	49,016	51.3	905	7,262	2.6	2,106	87,705	58.1
2017FY	12,081	18,828	-10.1	100,635	52.3	471	35,266	44.9	782	7,420	58.2	1,673	57,812	56.0
2018/01~03	3,923	5,344	-17.0	29,240	23.4	120	10,656	37.0	172	1,640	26.3	415	16,944	15.9
2018/04~06	4,656	2,751	-27.7	31,034	52.0	125	9,922	30.5	243	2,002	9.9	503	19,110	73.8
2018/07~09	4,182	2,769	-29.1	41,104	79.3	182	13,988	108.7	282	1,740	2.9	642	25,376	76.3
2018/10~12	3,916	3,124	-45.9	42,605	51.9	186	14,450	40.2	208	1,880	-17.1	546	26,275	69.7
2018/11	1,178	1,058	17.3	14,752	47.9	60	4,813	50.8	63	542	-35.2	190	9,397	58.0
2018/12	1,300	1,123	-65.2	13,854	64.0	69	5,439	94.9	58	741	69.2	169	7,674	47.1
2019/01	1,305	892	-57.4	8,281	-0.7	58	4,964	26.3	39	409	3.0	112	2,908	-27.5
2019/01~2019/01	1,305	892	-57.4	8,281	-0.7	58	4,964	26.3	39	409	3.0	112	2,908	-27.5
2018/04~2019/01	14,059	9,536	-38.8	123,024	54.3	551	43,324	51.8	772	6,031	-2.4	1,803	73,669	64.1

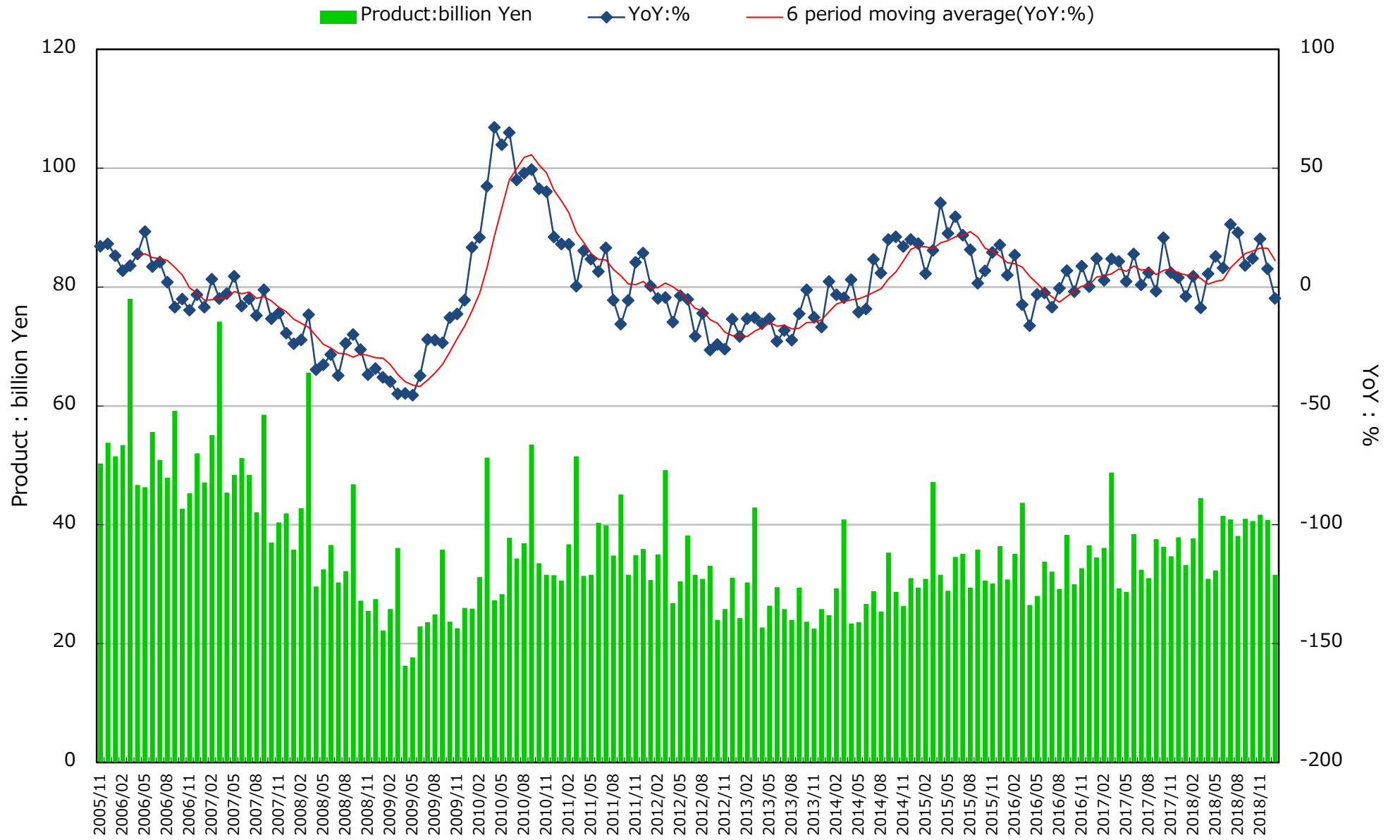
	Industrial for measuring equipment instruments													
	miscellaneous test and measuring equipment			Detector, transducer and transmitters									Flow gauge	
	Quantity(n)		VALUE	Quantity(n)		VALUE		Quantity(n)		VALUE		Quantity(n)		VALUE
2018CY	49,340	0.4	133,140	8.1	1,261,931	13,090	3.1	279,745	9,650	-0.4	110,382	9,297	1.8	
2017FY	48,313	6.4	123,030	3.2	1,268,964	12,622	0.0	312,708	9,733	4.9	106,110	8,990	-5.0	
2018/01~03	12,932	-5.9	35,117	-0.4	327,147	3,229	-2.4	68,762	2,385	1.8	30,527	3,042	-4.5	
2018/04~06	11,083	-2.3	31,359	16.6	330,487	3,332	11.5	74,651	2,333	-2.5	29,549	1,688	-2.0	
2018/07~09	12,163	2.1	33,845	14.7	303,223	3,321	3.3	66,812	2,403	-1.3	27,786	2,205	14.3	
2018/10~12	13,162	8.5	32,819	4.2	301,074	3,208	0.6	69,520	2,529	0.4	22,520	2,362	2.8	
2018/11	3,892	13.0	11,297	10.8	101,771	1,079	-4.9	22,968	847	0.4	8,029	796	1.8	
2018/12	4,920	2.6	10,876	0.8	100,312	996	-4.8	22,010	831	-6.5	6,775	818	3.2	
2019/01	3,347	-1.1	9,659	6.4	91,977	973	-6.5	20,226	667	-1.9	7,253	869	10.8	
2019/01~2019/01	3,347	-1.1	9,659	6.4	91,977	973	-6.5	20,226	667	-1.9	7,253	869	10.8	
2018/04~2019/01	39,755	2.6	107,682	11.0	1,026,761	10,834	3.8	231,209	7,932	-1.2	87,108	7,124	5.8	

	Industrial for measuring equipment instruments												
	Detector, transducer and transmitters			Receiving instruments			Analyzer for processing			Monitoring and control systems for processing			
	Quantity(n)		VALUE	Quantity(n)		VALUE	Quantity(n)		VALUE	Quantity(n)		VALUE	
2018CY	134,896	15,967	10.2	9,775	0.6	793,590	17,245	5.4	22,969	12,824	-6.3	22,423	40.8
2017FY	130,536	14,746	7.8	9,653	6.4	793,663	16,637	3.3	23,883	13,364	0.1	15,608	-7.7
2018/01~03	30,799	3,722	7.6	2,963	-2.1	207,360	4,378	6.9	6,189	3,805	-7.8	5,246	-5.7
2018/04~06	33,321	3,794	6.7	1,963	6.8	222,824	4,582	17.4	5,531	2,804	10.2	5,519	64.7
2018/07~09	33,520	3,974	6.3	2,226	1.6	184,241	4,081	2.9	5,150	2,913	-20.2	7,299	141.8
2018/10~12	37,256	4,477	20.1	2,623	-1.5	179,165	4,204	-4.2	6,099	3,302	-1.8	4,359	9.2
2018/11	12,741	1,528	18.7	790	2.9	54,740	1,369	-0.4	2,025	1,031	-6.9	1,813	40.7
2018/12	10,766	1,323	6.4	1,059	12.8	58,527	1,348	-13.0	1,854	1,215	-0.2	1,429	12.2
2019/01	9,667	1,201	10.7	674	-7.8	48,394	1,136	-18.3	1,804	1,098	8.2	1,460	65.7
2019/01~2019/01	9,667	1,201	10.7	674	-7.8	48,394	1,136	-18.3	1,804	1,098	8.2	1,460	65.7
2018/04~2019/01	113,764	13,446	11.0	7,486	0.9	634,624	14,003	2.6	18,584	10,117	-4.3	18,637	65.8

	Industrial for measuring equipment instruments						Radiation instruments			Monitoring instruments for environmental quality			
	Monitoring and control systems for processing			Miscellaneous industrial measuring equipment instrument for process automation			Quantity(n)			VALUE			
	Quantity(n)		VALUE	Quantity(n)		VALUE	Quantity(n)		VALUE	Quantity(n)		VALUE	
2018CY	3,387	16,626	69.8	5,797	-5.5	22,869	6.5	345,408	6,214	9.7	39,076	20,264	10.4
2017FY	2,751	9,475	-12.4	6,133	0.7	21,677	13.3	303,634	6,124	-14.6	44,085	18,815	10.1
2018/01~03	1,081	3,431	-8.5	1,815	0.1	6,347	3.5	55,508	3,049	17.7	10,638	5,351	9.3
2018/04~06	482	4,314	122.4	1,205	-14.5	5,344	16.1	89,741	706	65.3	8,977	4,572	20.7
2018/07~09	1,078	5,814	285.5	1,485	-1.7	5,423	0.9	147,132	1,495	-0.2	9,651	5,201	15.6
2018/10~12	746	3,067	18.1	1,292	-7.5	5,755	7.5	53,027	964	-16.2	9,810	5,140	-0.8
2018/11	337	1,468	61.3	345	-9.0	2,044	26.9	31,817	284	4.4	3,421	1,782	-3.6
2018/12	203	913	3.3	516	32.3	1,857	1.1	9,037	394	-34.6	3,056	1,535	-14.6
2019/01	206	946	142.6	514	4.7	1,581	7.8	2,590	297	-65.0	2,966	1,441	-8.3
2019/01~2019/01	206	946	142.6	514	4.7	1,581	7.8	2,590	297	-65.0	2,966	1,441	-8.3
2018/04~2019/01	2,512	14,141	119.8	4,496	-6.5	18,103	7.8	292,490	3,462	-11.8	31,404	16,354	8.8

Sources: CURRENT PRODUCTION STATISTICS (Japan Ministry of Economy, Trade and Industry) (<http://www.meti.go.jp/statistics/index.html>)

CURRENT PRODUCTION STATISTICS data:Electric Measuring Instruments



Sources: CURRENT PRODUCTION STATISTICS (Japan Ministry of Economy, Trade and Industry) [<http://www.meti.go.jp/statistics/index.html>]